

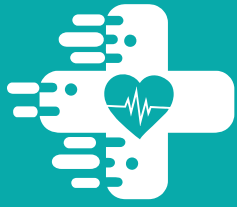


**SUMIT SURGICAL**



# Medical Equipments

“ QUALITY CREATES BRAND, SERVICE CREATES FUTURE ”



**SUMIT SURGICAL**

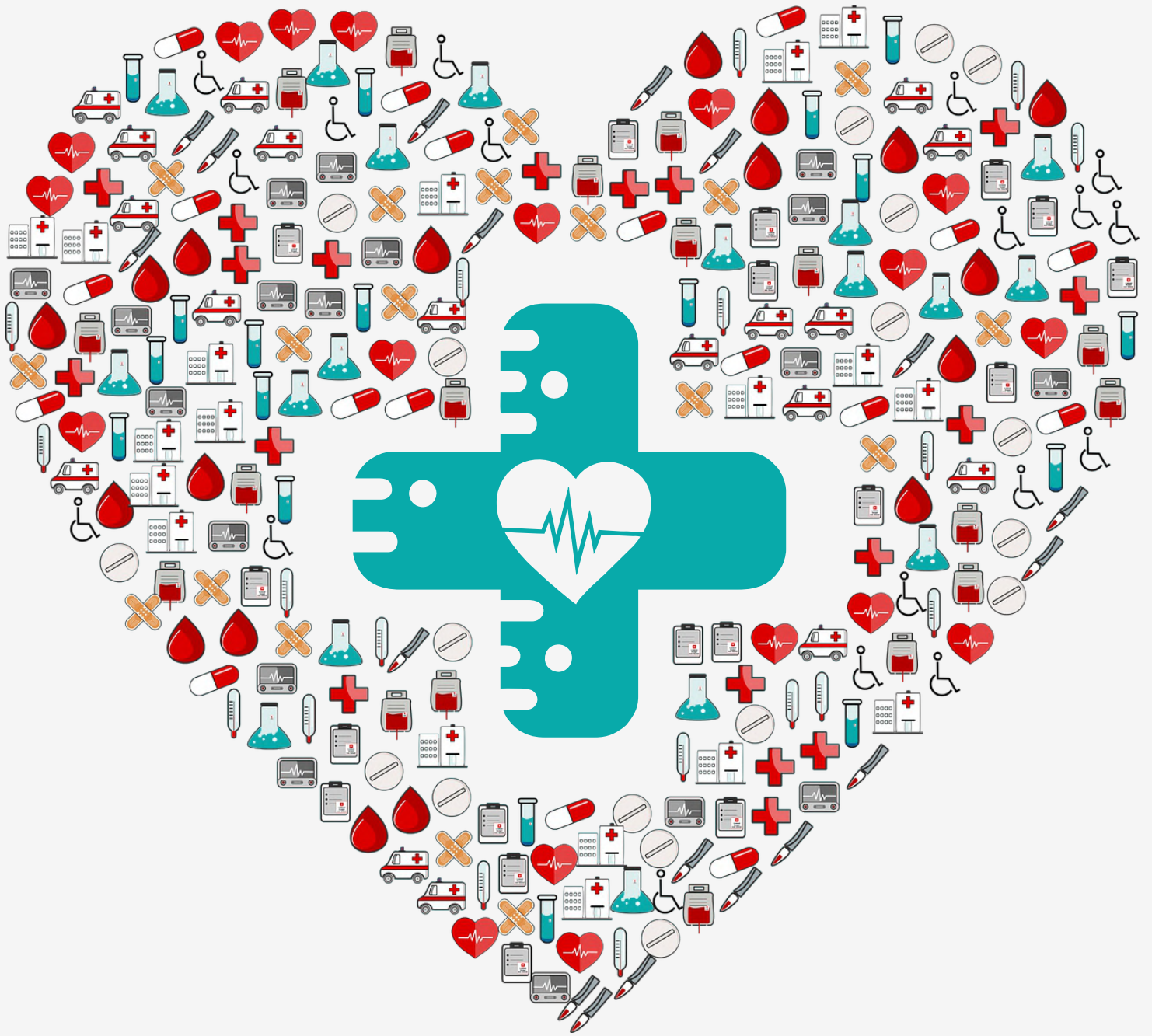
## About Sumit Surgical

Founded in 2003, Sumit Surgical is a leading developer of medical products and solutions for 21st-century health care sector. We offer a wide and advanced range of operation theatre LED lamps, High – tech operation theatre tables, modern pendants, LED phototherapy units, digital health monitors, and various other medical instruments.

Inspired by the MAKE IN INDIA mission initiated by India’s Honorable Prime Minister Mr. Narendra Modi, Sumit Surgical has diversified its operations in various fields of medicare that has enabled us to cater to the dynamic needs of global health management sector. The futuristic approach adopted by Sumit Surgical since more than a decade of commencement has led it into a leading enterprise with rich experience in scientific research development, manufacturing, and marketing of medical products.

Exported to more than 50 countries around the globe, we are committed to becoming a prestigious medical equipment supplier both in the overseas and domestic industry by exporting our products to every country by the target year 2025. The entire team of Sumit Surgical represents professionalism, innovation, discipline, and Passion. With more than 150 dedicated members working round the clock to achieve company’s goal , any target feels accomplishable.

At Sumit Surgical , we continuously research and develop products for the ever-changing demands of the medical sector as we commit to serve our clients with advanced products and services every time. We believe in maintaining long-term professional relations with our customers as our motto being “ QUALITY CREATES BRAND, SERVICE CREATES FUTURE”



Lighting the  
Future

Over **2000**  
Distributors  
PAN India

Over **8000**  
Installation in  
INDIA market

Global reach to  
**70+**  
Countries

Best Manufacturer  
of medical equipment  
**Award 2017**

# Mission, Vision & Our Motto

## Mission

By 2025, our mission is to make our products reach to each and every corner of the world.



**Mission**

**Vision**

**Our Motto**

## Vision

To provide proficient medical equipment to healthcare experts

## Our Motto

Quality Creates Brand  
Service  
Creates Future

# Our Certificate

**Ukcert**  
Certification & Inspection

## Certificate of Registration

This is to certify that the Quality Management System for Medical Devices of **SUMIT SURGICAL INDUSTRIES** at J-37, DSIIDC Industrial Area, Sector-4, Bawana, North West Delhi, Delhi-110039, India has been independently assessed and is compliant with the requirements of:

**ISO 13485:2016**

For the following scope of activities:  
Manufacturing, Sales and Services of ICU & Operation Theater Medical Equipment, Various Model LED Surgical Light, Operating Table, Hospital Equipment, Devices & Accessories and Hospital Furniture.

Certificate Number: UQ-12741

Validity of this certificate can be verified at [www.ukcertifications.org.uk/verify](http://www.ukcertifications.org.uk/verify)

Date of Certification: 26<sup>th</sup> April 2019  
1<sup>st</sup> Surveillance Audit Due: 25<sup>th</sup> April 2020  
2<sup>nd</sup> Surveillance Audit Due: 25<sup>th</sup> April 2021  
Certificate Expiry (subject to the company maintaining its system to the required standard): 25<sup>th</sup> April 2022

*Samuel..*  
Authorised Signatory

**Ukcert**  
Certification & Inspection

## Certificate of Compliance

This is to certify that the **SUMIT SURGICAL INDUSTRIES** at J-37, DSIIDC Industrial Area, Sector-4, Bawana, North West Delhi, Delhi-110039, India has been assessed and found working satisfactorily as per the norms of "Good Manufacturing Practice" as laid down by World Health Organisation

**Good Manufacturing Practice (GMP) System**

For the following scope of activities:  
Manufacturing, Sales and Services of ICU & Operation Theater Medical Equipment, Various Model LED Surgical Light, Operating Table, Hospital Equipment, Devices & Accessories and Hospital Furniture.

Certificate Number: UQ-12742

Validity of this certificate can be verified at [www.ukcertifications.org.uk/verify](http://www.ukcertifications.org.uk/verify)

Date of Certification: 26<sup>th</sup> April 2019  
1<sup>st</sup> Surveillance Audit Due: 25<sup>th</sup> April 2020  
2<sup>nd</sup> Surveillance Audit Due: 25<sup>th</sup> April 2021  
Certificate Expiry (subject to the company maintaining its system to the required standard): 25<sup>th</sup> April 2022

*Samuel..*  
Authorised Signatory

**Ukcert**  
Certification & Inspection

## Certificate of Compliance

**CE**

Confirms that the Class I complies according to the directive Council Directive on Medical Devices 93/42/EEC as Amended 2007/17/EC.

Certificate No: CE-3860

Manufacturer Name: **SUMIT SURGICAL INDUSTRIES**  
Address: J-37, DSIIDC Industrial Area, Sector-4, Bawana, North West Delhi, Delhi-110039  
Products: ICU & Operation theater Medical Equipment, Various Model LED Surgical Light, Operating Table, Hospital Equipment, Devices & Accessories and Hospital Furniture.

Complies with the requirements applicable to it. The manufacturer's technical documentation as required for Medical Device according to the Council Directive on Medical Device 93/42/EEC as Amended 2007/17/EC has been reviewed and found to comply with the requirements for Class I Medical Device Directive. Any significant changes in the design or construction of the product, and agreed upon by us, this declaration will lose its validity.

This certificate is issued under the following conditions:  
1. It applies only to the quality system maintained in the manufacture of above referenced models and it does not substitute the design or type-approval procedures, if required.  
2. The certificate remains valid until the manufacturing conditions or the quality systems are not changed.  
3. The certificate validity is conditioned by positive results of surveillance audits.  
4. The CE mark as shown above can be used, under the responsibility of the manufacturer, after completion of an EC Declaration of conformity and compliance with all relevant EU Directives. The statement is based on a single evaluation of one sample of above mentioned product. It does not imply an assessment of the whole production.

Validity of this certificate can be verified at [www.ukcertifications.org.uk/verify](http://www.ukcertifications.org.uk/verify)

Date of Certification: 26<sup>th</sup> April 2019  
1<sup>st</sup> Surveillance Audit Due: 25<sup>th</sup> April 2020  
2<sup>nd</sup> Surveillance Audit Due: 25<sup>th</sup> April 2021  
Certificate Expiry (subject to the company maintaining its system to the required standard): 25<sup>th</sup> April 2022

*Samuel..*  
Authorised Signatory

**Ukcert**  
Certification & Inspection

## Certificate of Compliance

**IEC** Standard Compliance

We hereby declare that the technical file of product conforms with the requirement of IEC 60601-1:2015.

Certificate No: UQ-12740

Manufacturer Name: **SUMIT SURGICAL INDUSTRIES**  
Address: J-37, DSIIDC Industrial Area, Sector-4, Bawana, North West Delhi, Delhi-110039  
Product: ICU & Operation theater Medical Equipment, Various Model LED Surgical Light, Operating Table, Hospital Equipment, Devices & Accessories and Hospital Furniture.

The Certification body has performed an audit of the above product testing and verified the design system, manufacturing and final inspection of the certified product. The product specification has been reviewed, approved and is subject to continuous surveillance according to standard IEC 60601-1:2015 requirement.

This certificate is issued under the following conditions:  
1. Fulfilled are requirement as per implemented of suggested standards.  
2. The certificate remains valid until the manufacturing conditions are changed.  
3. The certificate validity is conditioned by positive results of surveillance audits.  
4. After fulfilling the relevant Standard testing performance, the manufacturer shall affix to each device, of the referenced models.

The compliance as shown above can be used, under the responsibility of the manufacturer, after completion of a Declaration of conformity and compliance with all relevant Standard requirements. The statement is based on a single evaluation of one sample of above mentioned product. It does not imply an assessment of the whole production.

Validity of this certificate can be verified at [www.ukcertifications.org.uk/verify](http://www.ukcertifications.org.uk/verify)

Date of Certification: 26<sup>th</sup> April 2019  
1<sup>st</sup> Surveillance Audit Due: 25<sup>th</sup> April 2020  
2<sup>nd</sup> Surveillance Audit Due: 25<sup>th</sup> April 2021  
Certificate Expiry (subject to the company maintaining its system to the required standard): 25<sup>th</sup> April 2022

*Samuel..*  
Authorised Signatory

**Ukcert**  
Certification & Inspection

## Certificate of Registration

This is to certify that **SUMIT SURGICAL INDUSTRIES** ADDRESS: J-37, DSIIDC INDUSTRIAL AREA, SECTOR-4 BAWANA, NORTH WEST DELHI, DELHI - 110039 (INDIA) Has been assessed by QCS and found to be Compliant with the requirements of:

**ISO 14001:2015**  
"Environment Management System"

For the following scope:  
"MANUFACTURER, SUPPLIER & WHOLESALE, EXPORTER OF SUPPLEMENTS, SURGICAL MASK, FACE MASK, PROTECTIVE BREATHING MASK, SANITIZER, DISPOSABLE KIT, WELDING SURGICAL DUST FACE MASK, INFRARED THERMOMETER, NON WOVEN SURGICAL ITEMS, NON WOVEN MASK, PPE KIT, ICU EQUIPMENT, OPERATION THEATRE EQUIPMENT, SURGICAL PENDANT, ENDOSCOPIC PENDANT, HOSPITAL FURNITURE, SURGICAL LED LAMPS, SURGICAL TABLES, AIR COMPRESSOR, PATIENT MONITOR, PHOTOTHERAPY, MEDICAL DEVICES"

Certificate Number: QCS-2020-STSL-24271

To verify this certificate please visit at [www.gacsb.us](http://www.gacsb.us)

Date of Certification: 24<sup>th</sup> Apr 2020  
Date of Recertification: 23<sup>rd</sup> Apr 2023  
1<sup>st</sup> Surveillance Due: 23<sup>rd</sup> Apr 2021  
2<sup>nd</sup> Surveillance Due: 23<sup>rd</sup> Apr 2022

*Samuel..*  
Authorised Signatory

Validity of this Certificate is subject to Annual Surveillance audits done successfully. This certificate remains the property of QCS and must be returned whenever demanded QCS is an independent system product and personal assessment body QCS is accredited by Global Accreditation Certification Board (GACSB).

**Ukcert**  
Certification & Inspection

## Certificate of Compliance

This is to certify that **FOOD AND DRUG ADMINISTRATION OF SUMIT SURGICAL INDUSTRIES** Manufactured at the following Products of SUMIT SURGICAL INDUSTRIES ADDRESS: J-37, DSIIDC INDUSTRIAL AREA, SECTOR-4 BAWANA, NORTH WEST DELHI, DELHI - 110039 (INDIA) Are under our supervision and are FDA Approved PRODUCT COVERED UNDER CERTIFICATION AS MENTIONED BELOW

"MANUFACTURER, SUPPLIER & WHOLESALE, EXPORTER OF SUPPLEMENTS, SURGICAL MASK, FACE MASK, PROTECTIVE BREATHING MASK, SANITIZER, DISPOSABLE KIT, WELDING SURGICAL DUST FACE MASK, INFRARED THERMOMETER, NON WOVEN SURGICAL ITEMS, NON WOVEN MASK, PPE KIT, ICU EQUIPMENT, OPERATION THEATRE EQUIPMENT, SURGICAL PENDANT, ENDOSCOPIC PENDANT, HOSPITAL FURNITURE, SURGICAL LED LAMPS, SURGICAL TABLES, AIR COMPRESSOR, PATIENT MONITOR, PHOTOTHERAPY, MEDICAL DEVICES"

All Products are FDA for All Year including Passover  
Certificate Number: QCS-2020-STSL-24276

To verify this certificate please visit at [www.gacsb.us](http://www.gacsb.us)

Date of Certification: 24<sup>th</sup> Apr 2020  
Date of Recertification: 23<sup>rd</sup> Apr 2023  
1<sup>st</sup> Surveillance Due: 23<sup>rd</sup> Apr 2021  
2<sup>nd</sup> Surveillance Due: 23<sup>rd</sup> Apr 2022

*Samuel..*  
Authorised Signatory

Validity of this Certificate is subject to Annual Surveillance audits done successfully. This certificate remains the property of QCS and must be returned whenever demanded QCS is an independent system product and personal assessment body QCS is accredited by Global Accreditation Certification Board (GACSB).

**Ukcert**  
Certification & Inspection

## Certificate of Compliance

This is to certify that **SUMIT SURGICAL INDUSTRIES** ADDRESS: J-37, DSIIDC INDUSTRIAL AREA, SECTOR-4 BAWANA, NORTH WEST DELHI, DELHI - 110039 (INDIA) Has been assessed and found working satisfactorily as per the norms of "Good Manufacturing Practice" as laid down by World Health Organization

**Good Manufacturing Practice (GMP) System**

For the following scope:  
"MANUFACTURER, SUPPLIER & WHOLESALE, EXPORTER OF SUPPLEMENTS, SURGICAL MASK, FACE MASK, PROTECTIVE BREATHING MASK, SANITIZER, DISPOSABLE KIT, WELDING SURGICAL DUST FACE MASK, INFRARED THERMOMETER, NON WOVEN SURGICAL ITEMS, NON WOVEN MASK, PPE KIT, ICU EQUIPMENT, OPERATION THEATRE EQUIPMENT, SURGICAL PENDANT, ENDOSCOPIC PENDANT, HOSPITAL FURNITURE, SURGICAL LED LAMPS, SURGICAL TABLES, AIR COMPRESSOR, PATIENT MONITOR, PHOTOTHERAPY, MEDICAL DEVICES"

Certificate Number: QCS-2020-STSL-24275

Validity of this certificate can be verified at [www.gacsb.us](http://www.gacsb.us)

Date of Certification: 24<sup>th</sup> Apr 2020  
Date of Recertification: 23<sup>rd</sup> Apr 2023  
1<sup>st</sup> Surveillance Due: 23<sup>rd</sup> Apr 2021  
2<sup>nd</sup> Surveillance Due: 23<sup>rd</sup> Apr 2022

*Samuel..*  
Authorised Signatory

Validity of this Certificate is subject to Annual Surveillance audits done successfully.

**Ukcert**  
Certification & Inspection

## Certificate of Registration

This is to certify that **SUMIT SURGICAL INDUSTRIES** ADDRESS: J-37, DSIIDC INDUSTRIAL AREA, SECTOR-4 BAWANA, NORTH WEST DELHI, DELHI - 110039 (INDIA) Has been assessed by QCS and found to be Compliant with the requirements of:

**ISO 13485:2016**  
"Quality Medical System For Medical Devices"

For the following scope:  
"MANUFACTURER, SUPPLIER & WHOLESALE, EXPORTER OF SUPPLEMENTS, SURGICAL MASK, FACE MASK, PROTECTIVE BREATHING MASK, SANITIZER, DISPOSABLE KIT, WELDING SURGICAL DUST FACE MASK, INFRARED THERMOMETER, NON WOVEN SURGICAL ITEMS, NON WOVEN MASK, PPE KIT, ICU EQUIPMENT, OPERATION THEATRE EQUIPMENT, SURGICAL PENDANT, ENDOSCOPIC PENDANT, HOSPITAL FURNITURE, SURGICAL LED LAMPS, SURGICAL TABLES, AIR COMPRESSOR, PATIENT MONITOR, PHOTOTHERAPY, MEDICAL DEVICES"

Certificate Number: QCS-2020-STSL-24272

To verify this certificate please visit at [www.gacsb.us](http://www.gacsb.us)

Date of Certification: 24<sup>th</sup> Apr 2020  
Date of Recertification: 23<sup>rd</sup> Apr 2023  
1<sup>st</sup> Surveillance Due: 23<sup>rd</sup> Apr 2021  
2<sup>nd</sup> Surveillance Due: 23<sup>rd</sup> Apr 2022

*Samuel..*  
Authorised Signatory

Validity of this Certificate is subject to Annual Surveillance audits done successfully. This certificate remains the property of QCS and must be returned whenever demanded QCS is an independent system product and personal assessment body QCS is accredited by Global Accreditation Certification Board (GACSB).

**Ukcert**  
Certification & Inspection

## Certificate of Registration

This is to certify that **SUMIT SURGICAL INDUSTRIES** ADDRESS: J-37, DSIIDC INDUSTRIAL AREA, SECTOR-4 BAWANA, NORTH WEST DELHI, DELHI - 110039 (INDIA) Has been assessed by QCS and found to be Compliant with the requirements of:

**ISO 45001:2018**  
"Occupational Health & Safety Management System"

For the following scope:  
"MANUFACTURER, SUPPLIER & WHOLESALE, EXPORTER OF SUPPLEMENTS, SURGICAL MASK, FACE MASK, PROTECTIVE BREATHING MASK, SANITIZER, DISPOSABLE KIT, WELDING SURGICAL DUST FACE MASK, INFRARED THERMOMETER, NON WOVEN SURGICAL ITEMS, NON WOVEN MASK, PPE KIT, ICU EQUIPMENT, OPERATION THEATRE EQUIPMENT, SURGICAL PENDANT, ENDOSCOPIC PENDANT, HOSPITAL FURNITURE, SURGICAL LED LAMPS, SURGICAL TABLES, AIR COMPRESSOR, PATIENT MONITOR, PHOTOTHERAPY, MEDICAL DEVICES"

Certificate Number: QCS-2020-STSL-24273

To verify this certificate please visit at [www.gacsb.us](http://www.gacsb.us)

Date of Certification: 24<sup>th</sup> Apr 2020  
Date of Recertification: 23<sup>rd</sup> Apr 2023  
1<sup>st</sup> Surveillance Due: 23<sup>rd</sup> Apr 2021  
2<sup>nd</sup> Surveillance Due: 23<sup>rd</sup> Apr 2022

*Samuel..*  
Authorised Signatory

Validity of this Certificate is subject to Annual Surveillance audits done successfully. This certificate remains the property of QCS and must be returned whenever demanded QCS is an independent system product and personal assessment body QCS is accredited by Global Accreditation Certification Board (GACSB).





Capacitive Touch Panel



Sterilizable Handle

## SSI-7 Series Operating Light

We are using our most advanced technology in SSI-7 i.e. Highest intensity, quick response digital touch panel integrated with high definition Optical system. SSI-7 is a revolutionary product in surgical lighting division. The streamlined Shape minimize disruption of laminar airflow in the operation theatre, and the light weight of the lamp enables easy setting of the lamp and its stable positioning.

# Unique & Optional Features of Our Lights

## Touch Free Intensity Control

Sumit Surgical Provides you some latest & high technology services with our LEDs. We provide Proximity sensor in our SSI-621 series. Proximity sensor is able to detect the nearby hand without any physical touch. During the surgery procedures, proximity sensor is very useful to surgeons. It is so easy to use, that even the untrained staff can also use this. In this feature, one can increase & decrease the intensity/colour temp. by their hand movements only. Not important to touch the remote or control panel.

## Wireless Wall Control Panel

Sumit Surgical Lights have wall control system also. The special thing about this control panel is that, this panel is completely wireless. You can fix this control panel on OT wall. This system is able to work up to the distance of 80 Ft. All the features of OT light can be control by this panel.

## Aluminium Enclosure

Lamp head is made of an aluminium alloy, with outstanding heat dissipation capacity, which extends the LED elements working life and illuminating efficiency. Aluminium is a powerful & efficient heat absorber, Which makes it perfect material for lamp heads and compa



*Operating Light Head*

## Technical Data

Intensity:	2,00,000 Lux
Spot Diameter:	100-150 mm
Depth Diameter:	10-25 cm
Colour Temp.:	3800 - 4800k
Colour Rendering Index:	93 Ra
Focusing:	Manual
LED Average life:	>50000 Hrs.
Number of LED's:	84
Diameter of light:	760mm
Intensity Control:	10~100 Digital
Power Supply:	220V/50Hz AC
Power Consumption:	67.2 watt
Special Function:	Dual Memory Function



*Operating Light Head*

## Technical Data

Intensity:	1,75,000 Lux
Spot Diameter:	100-150 mm
Depth Diameter:	10-25 cm
Colour Temp.:	3800 - 4800k
Colour Rendering Index:	93 Ra
Focusing:	Manual
LED Average life:	>50000 Hrs.
Number of LED's:	65
Diameter of light:	760mm
Intensity Control:	10~100 Digital
Power Supply:	220V/50Hz AC
Power Consumption:	56.8 watt
Special Function:	Dual Memory Function



*Floor Model*

## Technical Data

Intensity:	1,75,000 Lux
Spot Diameter:	100-150 mm
Depth Diameter:	10-25 cm
Colour Temp.:	3800 - 4800k
Colour Rendering Index:	93 Ra
Focusing:	Manual
LED Average life:	>50000 Hrs.
Number of LED's:	65
Diameter of light:	760mm
Intensity Control:	10~100 Digital
Power Supply:	220V/50Hz AC
Power Consumption:	56.8 watt
Special Function:	Dual Memory Function



*Operating Light Head*

## Technical Data

Intensity:	1,50,000 Lux
Spot Diameter:	100-150 mm
Depth Diameter:	10-25 cm
Colour Temp.:	3800 - 4800k
Colour Rendering Index:	93 Ra
Focusing:	Manual
LED Average life:	>50000 Hrs.
Number of LED's:	52
Diameter of light:	760mm
Intensity Control:	10~100 Digital
Power Supply:	220V/50Hz AC
Power Consumption:	46.4 watt
Special Function:	Dual Memory Function



*Floor Model*

## Technical Data

Intensity:	1,50,000 Lux
Spot Diameter:	100-150 mm
Depth Diameter:	10-25 cm
Colour Temp.:	3800 - 4800k
Colour Rendering Index:	93 Ra
Focusing:	Manual
LED Average life:	>50000 Hrs.
Number of LED's:	52
Diameter of light:	760mm
Intensity Control:	10~100 Digital
Power Supply:	220V/50Hz AC
Power Consumption:	46.4 watt
Special Function:	Dual Memory Function



*Operating Light Head*

## Technical Data

Intensity:	1,25,000 Lux
Spot Diameter:	100-150 mm
Depth Diameter:	10-25 cm
Colour Temp.:	3800 - 4800k
Colour Rendering Index:	93 Ra
Focusing:	Manual
LED Average life:	>50000 Hrs.
Number of LED's:	39
Diameter of light:	760mm
Intensity Control:	10~100 Digital
Power Supply:	220V/50Hz AC
Power Consumption:	36 watt
Special Function:	Dual Memory Function



*Floor Model*

## Technical Data

Intensity:	1,25,000 Lux
Spot Diameter:	100-150 mm
Depth Diameter:	10-25 cm
Colour Temp.:	3800 - 4800k
Colour Rendering Index:	93 Ra
Focusing:	Manual
LED Average life:	>50000 Hrs.
Number of LED's:	39
Diameter of light:	760mm
Intensity Control:	10~100 Digital
Power Supply:	220V/50Hz AC
Power Consumption:	36 watt
Special Function:	Dual Memory Function



*Operating Light Head*

## Technical Data

Intensity:	2,00,000 x 2 Lux
Spot Diameter:	100-150 mm
Depth Diameter:	10-25 cm
Colour Temp.:	3800 - 4800k
Colour Rendering Index:	93 Ra
Focusing:	Manual
LED Average life:	>50000 Hrs.
Number of LED's:	84 x 2
Diameter of light:	760mm
Intensity Control:	10~100 Digital
Power Supply:	220V/50Hz AC
Power Consumption:	67.2 + 67.2 watt
Special Function:	Dual Memory Function



*Operating Light Head*

## Technical Data

Intensity:	2,00,000 Lux
Satellite Intensity:	1,75,000 Lux
Spot Diameter:	100-150 mm
Depth Diameter:	10-25 cm
Colour Temp.:	3800 - 4800k
Colour Rendering Index:	93 Ra
Focusing:	Manual
LED Average life:	>50000 Hrs.
Number of LED's:	84 + 65
Diameter of light:	760mm
Intensity Control:	10~100 Digital
Power Supply:	220V/50Hz AC
Power Consumption:	67.2 + 56.8 watt
Special Function:	Dual Memory Function



*Operating Light Head*

## Technical Data

Intensity:	2,00,000 Lux
Satellite Intensity:	1,50,000 Lux
Spot Diameter:	100-150 mm
Depth Diameter:	10-25 cm
Colour Temp.:	3800 - 4800k
Colour Rendering Index:	93 Ra
Focusing:	Manual
LED Average life:	>50000 Hrs.
Number of LED's:	84 + 52
Diameter of light:	760mm
Intensity Control:	10~100 Digital
Power Supply:	220V/50Hz AC
Power Consumption:	67.2 + 46.4 watt
Special Function:	Dual Memory Function



*Operating Light Head*

## Technical Data

Intensity:	2,00,000 Lux
Satellite Intensity:	1,25,000 Lux
Spot Diameter:	100-150 mm
Depth Diameter:	10-25 cm
Colour Temp.:	3800 - 4800k
Colour Rendering Index:	93 Ra
Focusing:	Manual
LED Average life:	>50000 Hrs.
Number of LED's:	84 + 39
Diameter of light:	760mm
Intensity Control:	10~100 Digital
Power Supply:	220V/50Hz AC
Power Consumption:	67.2 + 36 watt
Special Function:	Dual Memory Function



*Operating Light Head*

## Technical Data

Intensity:	1,75,000 Lux
Satellite Intensity:	1,75,000 Lux
Spot Diameter:	100-150 mm
Depth Diameter:	10-25 cm
Colour Temp.:	3800 - 4800k
Colour Rendering Index:	93 Ra
Focusing:	Manual
LED Average life:	>50000 Hrs.
Number of LED's:	65 + 65
Diameter of light:	749mm
Intensity Control:	10~100 Digital
Power Supply:	220V/50Hz AC
Power Consumption:	56.8 + 56.8 watt
Special Function:	Dual Memory Function



*Operating Light Head*

## Technical Data

Intensity:	1,75,000 Lux
Satellite Intensity:	1,50,000 Lux
Spot Diameter:	100-150 mm
Depth Diameter:	10-25 cm
Colour Temp.:	3800 - 4800k
Colour Rendering Index:	93 Ra
Focusing:	Manual
LED Average life:	>50000 Hrs.
Number of LED's:	65 + 52
Diameter of light:	749mm
Intensity Control:	10~100 Digital
Power Supply:	220V/50Hz AC
Power Consumption:	56.8 + 46.4 watt
Special Function:	Dual Memory Function



*Operating Light Head*

## Technical Data

Intensity:	1,75,000 Lux
Satellite Intensity:	1,25,000 Lux
Spot Diameter:	100-150 mm
Depth Diameter:	10-25 cm
Colour Temp.:	3800 - 4800k
Colour Rendering Index:	93 Ra
Focusing:	Manual
LED Average life:	>50000 Hrs.
Number of LED's:	65 + 39
Diameter of light:	749mm
Intensity Control:	10~100 Digital
Power Supply:	220V/50Hz AC
Power Consumption:	56.8 + 36 watt
Special Function:	Dual Memory Function



*Operating Light Head*

## Technical Data

Intensity:	1,50,000 Lux
Satellite Intensity:	1,50,000 Lux
Spot Diameter:	100-150 mm
Depth Diameter:	10-25 cm
Colour Temp.:	3800 - 4800k
Colour Rendering Index:	93 Ra
Focusing:	Manual
LED Average life:	>50000 Hrs.
Number of LED's:	52 + 52
Diameter of light:	749mm
Intensity Control:	10~100 Digital
Power Supply:	220V/50Hz AC
Power Consumption:	46.4 + 46.4 watt
Special Function:	Dual Memory Function



*Operating Light Head*

## Technical Data

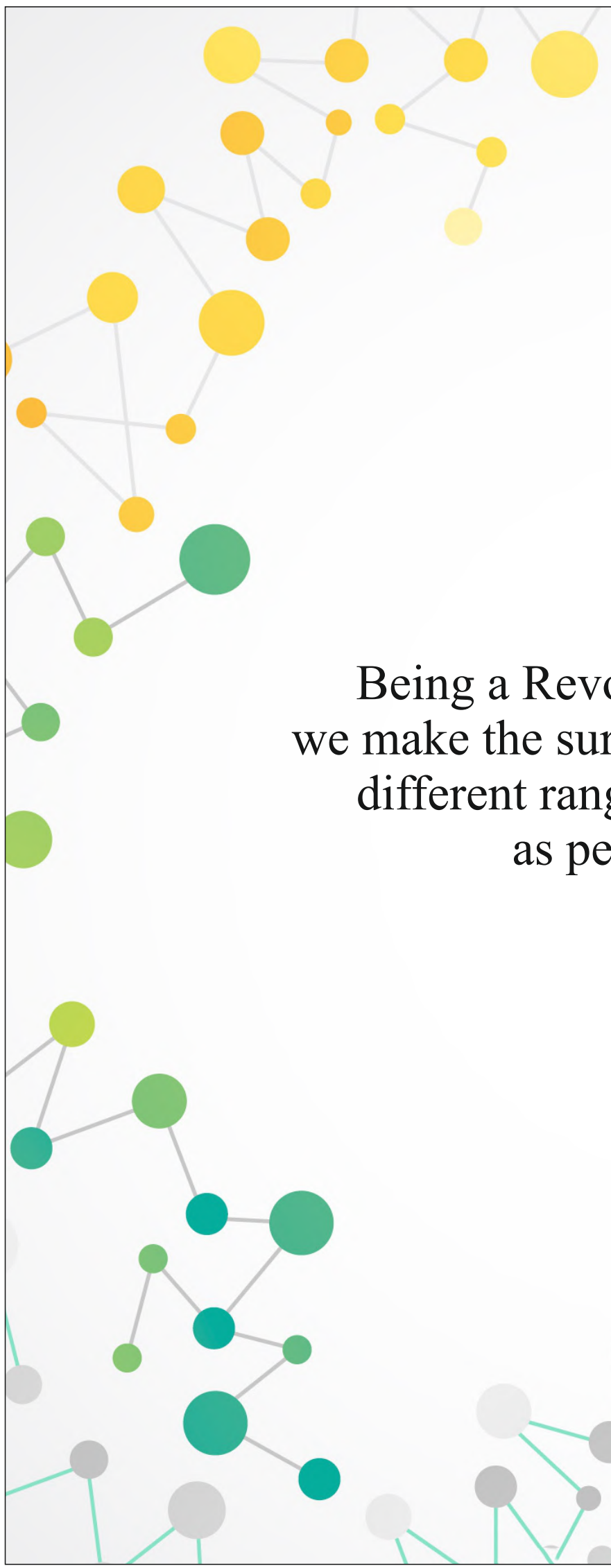
Intensity:	1,50,000 Lux
Satellite Intensity:	1,25,000 Lux
Spot Diameter:	100-150 mm
Depth Diameter:	10-25 cm
Colour Temp.:	3800 - 4800k
Colour Rendering Index:	93 Ra
Focusing:	Manual
LED Average life:	>50000 Hrs.
Number of LED's:	52 + 39
Diameter of light:	749mm
Intensity Control:	10~100 Digital
Power Supply:	220V/50Hz AC
Power Consumption:	46.4 + 36 watt
Special Function:	Dual Memory Function



*Operating Light Head*

## Technical Data

Intensity:	1,25,000 Lux
Satellite Intensity:	1,25,000 Lux
Spot Diameter:	100-150 mm
Depth Diameter:	10-25 cm
Colour Temp.:	3800 - 4800k
Colour Rendering Index:	93 Ra
Focusing:	Manual
LED Average life:	>50000 Hrs.
Number of LED's:	39 + 39
Diameter of light:	749mm
Intensity Control:	10~100 Digital
Power Supply:	220V/50Hz AC
Power Consumption:	36 + 36 watt
Special Function:	Dual Memory Function

A decorative graphic on the left side of the page consists of a network of interconnected nodes and lines. The nodes are represented by circles of various sizes and colors, including yellow, orange, green, teal, and blue. The lines are thin and light gray, connecting the nodes in a complex, branching pattern. The overall effect is that of a molecular structure or a data network.

Being a Revolutionary Interface,  
we make the surgeons able to **view** in a  
different range of **light intensity**  
as per their need.



Capacitive Touch Panel



Sterilizable Handle

## SSI-4H Series Operating Light

Ultra slim, unique shape & light weight Light head helps smooth and precise positions during surgery Comparing to other lights. These powerful lights provide impressive Intensity upto 150000 lux. Aster lights are compatible with laminar flow System.



*Operating Light Head*

## Technical Data

Intensity:	1,60,000 Lux
Spot Diameter:	100-150 mm
Depth Diameter:	10-25 cm
Colour Temp.:	3800 - 4800k
Colour Rendering Index:	93 Ra
Focusing:	Manual
LED Average life:	>50000 Hrs.
Number of LED's:	52
Diameter of light:	690mm
Intensity Control:	10~100 Digital
Power Supply:	220V/50Hz AC
Power Consumption:	41.6 watt
Special Function:	Dual Memory Function



*Floor Model*

## Technical Data

Intensity:	1,60,000 Lux
Spot Diameter:	100-150 mm
Depth Diameter:	10-25 cm
Colour Temp.:	3800 - 4800k
Colour Rendering Index:	93 Ra
Focusing:	Manual
LED Average life:	>50000 Hrs.
Number of LED's:	52
Diameter of light:	690mm
Intensity Control:	10~100 Digital
Power Supply:	220V/50Hz AC
Power Consumption:	41.6 watt
Special Function:	Dual Memory Function



*Operating Light Head*

## Technical Data

Intensity:	1,15,000 Lux
Spot Diameter:	100-150 mm
Depth Diameter:	10-25 cm
Colour Temp.:	3800 - 4800k
Colour Rendering Index:	93 Ra
Focusing:	Manual
LED Average life:	>50000 Hrs.
Number of LED's:	39
Diameter of light:	690mm
Intensity Control:	10~100 Digital
Power Supply:	220V/50Hz AC
Power Consumption:	31.2 watt
Special Function:	Dual Memory Function



*Floor Model*

## Technical Data

Intensity:	1,15,000 Lux
Spot Diameter:	100-150 mm
Depth Diameter:	10-25 cm
Colour Temp.:	3800 - 4800k
Colour Rendering Index:	93 Ra
Focusing:	Manual
LED Average life:	>50000 Hrs.
Number of LED's:	39
Diameter of light:	690mm
Intensity Control:	10~100 Digital
Power Supply:	220V/50Hz AC
Power Consumption:	31.2 watt
Special Function:	Dual Memory Function



*Operating Light Head*

## Technical Data

Intensity:	1,60,000 x 2 Lux
Spot Diameter:	100-150 mm
Depth Diameter:	10-25 cm
Colour Temp.:	3800 - 4800k
Colour Rendering Index:	93 Ra
Focusing:	Manual
LED Average life:	>50000 Hrs.
Number of LED's:	52 x 2
Diameter of light:	690mm
Intensity Control:	10~100 Digital
Power Supply:	220V/50Hz AC
Power Consumption:	41.6 + 41.6 watt
Special Function:	Dual Memory Function



*Operating Light Head*

### Technical Data

Intensity:	1,60,000 Lux
Satellite Intensity:	1,15,000 Lux
Spot Diameter:	100-150 mm
Depth Diameter:	10-25 cm
Colour Temp.:	3800 - 4800k
Colour Rendering Index:	93 Ra
Focusing:	Manual
LED Average life:	>50000 Hrs.
Number of LED's:	52 + 39
Diameter of light:	760mm
Intensity Control:	10~100 Digital
Power Supply:	220V/50Hz AC
Power Consumption:	41.6 + 31.2 watt
Special Function:	Dual Memory Function



*Operating Light Head*

## Technical Data

Intensity:	1,15,000 Lux
Satellite Intensity:	1,15,000 Lux
Spot Diameter:	100-150 mm
Depth Diameter:	10-25 cm
Colour Temp.:	3800 - 4800k
Colour Rendering Index:	93 Ra
Focusing:	Manual
LED Average life:	>50000 Hrs.
Number of LED's:	39 + 39
Diameter of light:	760mm
Intensity Control:	10~100 Digital
Power Supply:	220V/50Hz AC
Power Consumption:	31.2 + 31.2 watt
Special Function:	Dual Memory Function



Capacitive Touch Panel



Sterilizable Handle

## SSI-5P Series Operating Light

Powerful LED Technology helps keeping a cool head through an almost in existent heat development in the surgeon's head area and wound field. we design compact, effective and versatile Ossio Series. The lamp shape assures visual comfort and suitable laminar flow.



*Operating Light Head*

## Technical Data

Intensity:	1,55,000 Lux
Spot Diameter:	100-150 mm
Depth Diameter:	10-25 cm
Colour Temp.:	3800 - 4800k
Colour Rendering Index:	93 Ra
Focusing:	Manual
LED Average life:	>50000 Hrs.
Number of LED's:	55
Diameter of light:	690mm
Intensity Control:	10~100 Digital
Power Supply:	220V/50Hz AC
Power Consumption:	44 watt
Special Function:	Dual Memory Function



*Floor Model*

## Technical Data

Intensity:	1,55,000 Lux
Spot Diameter:	100-150 mm
Depth Diameter:	10-25 cm
Colour Temp.:	3800 - 4800k
Colour Rendering Index:	93 Ra
Focusing:	Manual
LED Average life:	>50000 Hrs.
Number of LED's:	55
Diameter of light:	690mm
Intensity Control:	10~100 Digital
Power Supply:	220V/50Hz AC
Power Consumption:	44 watt
Special Function:	Dual Memory Function



*Operating Light Head*

## Technical Data

Intensity:	1,35,000 Lux
Spot Diameter:	100-150 mm
Depth Diameter:	10-25 cm
Colour Temp.:	3800 - 4800k
Colour Rendering Index:	93 Ra
Focusing:	Manual
LED Average life:	>50000 Hrs.
Number of LED's:	44
Diameter of light:	690mm
Intensity Control:	10~100 Digital
Power Supply:	220V/50Hz AC
Power Consumption:	35.2 watt
Special Function:	Dual Memory Function



*Floor Model*

## Technical Data

Intensity:	1,35,000 Lux
Spot Diameter:	100-150 mm
Depth Diameter:	10-25 cm
Colour Temp.:	3800 - 4800k
Colour Rendering Index:	93 Ra
Focusing:	Manual
LED Average life:	>50000 Hrs.
Number of LED's:	44
Diameter of light:	690mm
Intensity Control:	10~100 Digital
Power Supply:	220V/50Hz AC
Power Consumption:	35.2 watt
Special Function:	Dual Memory Function



*Operating Light Head*

## Technical Data

Intensity:	1,00,000 Lux
Spot Diameter:	100-150 mm
Depth Diameter:	10-25 cm
Colour Temp.:	3800 - 4800k
Colour Rendering Index:	93 Ra
Focusing:	Manual
LED Average life:	>50000 Hrs.
Number of LED's:	33
Diameter of light:	690mm
Intensity Control:	10~100 Digital
Power Supply:	220V/50Hz AC
Power Consumption:	26.4 watt
Special Function:	Dual Memory Function



*Floor Model*

## Technical Data

Intensity:	1,00,000 Lux
Spot Diameter:	100-150 mm
Depth Diameter:	10-25 cm
Colour Temp.:	3800 - 4800k
Colour Rendering Index:	93 Ra
Focusing:	Manual
LED Average life:	>50000 Hrs.
Number of LED's:	33
Diameter of light:	690mm
Intensity Control:	10~100 Digital
Power Supply:	220V/50Hz AC
Power Consumption:	26.4 watt
Special Function:	Dual Memory Function



*Operating Light Head*

## Technical Data

Intensity:	1,55,000 x 2 Lux
Spot Diameter:	100-150 mm
Depth Diameter:	10-25 cm
Colour Temp.:	3800 - 4800k
Colour Rendering Index:	93 Ra
Focusing:	Manual
LED Average life:	>50000 Hrs.
Number of LED's:	55 x 2
Diameter of light:	690 mm
Intensity Control:	10~100 Digital
Power Supply:	220V/50Hz AC
Power Consumption:	44 + 44 watt
Special Function:	Dual Memory Function



*Operating Light Head*

## Technical Data

Intensity:	1,55,000 Lux
Satellite Intensity:	1,35,000 Lux
Spot Diameter:	100-150 mm
Depth Diameter:	10-25 cm
Colour Temp.:	3800 - 4800k
Colour Rendering Index:	93 Ra
Focusing:	Manual
LED Average life:	>50000 Hrs.
Number of LED's:	55 + 44
Diameter of light:	690mm
Intensity Control:	10~100 Digital
Power Supply:	220V/50Hz AC
Power Consumption:	44 +35.2 watt
Special Function:	Dual Memory Function



*Operating Light Head*

## Technical Data

Intensity:	1,55,000 Lux
Satellite Intensity:	1,00,000 Lux
Spot Diameter:	100-150 mm
Depth Diameter:	10-25 cm
Colour Temp.:	3800 - 4800k
Colour Rendering Index:	93 Ra
Focusing:	Manual
LED Average life:	>50000 Hrs.
Number of LED's:	55 + 33
Diameter of light:	690mm
Intensity Control:	10~100 Digital
Power Supply:	220V/50Hz AC
Power Consumption:	44 +26.4 watt
Special Function:	Dual Memory Function



*Operating Light Head*

## Technical Data

Intensity:	1,35,000 x 2 Lux
Spot Diameter:	100-150 mm
Depth Diameter:	10-25 cm
Colour Temp.:	3800 - 4800k
Colour Rendering Index:	93 Ra
Focusing:	Manual
LED Average life:	>50000 Hrs.
Number of LED's:	44 x 2
Diameter of light:	690 mm
Intensity Control:	10~100 Digital
Power Supply:	220V/50Hz AC
Power Consumption:	35.2 + 35.2 watt
Special Function:	Dual Memory Function



*Operating Light Head*

## Technical Data

Intensity:	1,35,000 Lux
Satellite Intensity:	1,00,000 Lux
Spot Diameter:	100-150 mm
Depth Diameter:	10-25 cm
Colour Temp.:	3800 - 4800k
Colour Rendering Index:	93 Ra
Focusing:	Manual
LED Average life:	>50000 Hrs.
Number of LED's:	44 + 33
Diameter of light:	760mm
Intensity Control:	10~100 Digital
Power Supply:	220V/50Hz AC
Power Consumption:	35.2 +26.4 watt
Special Function:	Dual Memory Function



*Operating Light Head*

## Technical Data

Intensity:	1,00,000 Lux
Satellite Intensity:	1,00,000 Lux
Spot Diameter:	100-150 mm
Depth Diameter:	10-25 cm
Colour Temp.:	3800 - 4800k
Colour Rendering Index:	93 Ra
Focusing:	Manual
LED Average life:	>50000 Hrs.
Number of LED's:	33 + 33
Diameter of light:	760mm
Intensity Control:	10~100 Digital
Power Supply:	220V/50Hz AC
Power Consumption:	26.4 +26.4 watt
Special Function:	Dual Memory Function



Capacitive Touch Panel



Sterilizable Handle

## SSI-5R Series Operating Light

Impressive lighting levels & ingenious Design make SSI-5R it perfect partner for surgical procedures. Maintenance - free OT light to ensure that surgeon can concentrate on the Demanding intervention



*Operating Light Head*

## Technical Data

Intensity:	1,60,000 Lux
Spot Diameter:	100-150 mm
Depth Diameter:	10-25 cm
Colour Temp.:	3800 - 4800k
Colour Rendering Index:	93 Ra
Focusing:	Manual
LED Average life:	>50000 Hrs.
Number of LED's:	60
Diameter of light:	690mm
Intensity Control:	10~100 Digital
Power Supply:	220V/50Hz AC
Power Consumption:	48 watt
Special Function:	Dual Memory Function



*Floor Model*

## Technical Data

Intensity:	1,60,000 Lux
Spot Diameter:	100-150 mm
Depth Diameter:	10-25 cm
Colour Temp.:	3800 - 4800k
Colour Rendering Index:	93 Ra
Focusing:	Manual
LED Average life:	>50000 Hrs.
Number of LED's:	60
Diameter of light:	690mm
Intensity Control:	10~100 Digital
Power Supply:	220V/50Hz AC
Power Consumption:	48 watt
Special Function:	Dual Memory Function



*Operating Light Head*

## Technical Data

Intensity:	1,45,000 Lux
Spot Diameter:	100-150 mm
Depth Diameter:	10-25 cm
Colour Temp.:	3800 - 4800k
Colour Rendering Index:	93 Ra
Focusing:	Manual
LED Average life:	>50000 Hrs.
Number of LED's:	48
Diameter of light:	690mm
Intensity Control:	10~100 Digital
Power Supply:	220V/50Hz AC
Power Consumption:	38.4 watt
Special Function:	Dual Memory Function



*Floor Model*

## Technical Data

Intensity:	1,45,000 Lux
Spot Diameter:	100-150 mm
Depth Diameter:	10-25 cm
Colour Temp.:	3800 - 4800k
Colour Rendering Index:	93 Ra
Focusing:	Manual
LED Average life:	>50000 Hrs.
Number of LED's:	48
Diameter of light:	690mm
Intensity Control:	10~100 Digital
Power Supply:	220V/50Hz AC
Power Consumption:	38.4 watt
Special Function:	Dual Memory Function



*Operating Light Head*

## Technical Data

Intensity:	1,10,000 Lux
Spot Diameter:	100-150 mm
Depth Diameter:	10-25 cm
Colour Temp.:	3800 - 4800k
Colour Rendering Index:	93 Ra
Focusing:	Manual
LED Average life:	>50000 Hrs.
Number of LED's:	36
Diameter of light:	690mm
Intensity Control:	10~100 Digital
Power Supply:	220V/50Hz AC
Power Consumption:	28.8 watt
Special Function:	Dual Memory Function



*Floor Model*

## Technical Data

Intensity:	1,10,000 Lux
Spot Diameter:	100-150 mm
Depth Diameter:	10-25 cm
Colour Temp.:	3800 - 4800k
Colour Rendering Index:	93 Ra
Focusing:	Manual
LED Average life:	>50000 Hrs.
Number of LED's:	36
Diameter of light:	690mm
Intensity Control:	10~100 Digital
Power Supply:	220V/50Hz AC
Power Consumption:	28.8 watt
Special Function:	Dual Memory Function



*Operating Light Head*

## Technical Data

Intensity:	1,60,000 x 2 Lux
Spot Diameter:	100-150 mm
Depth Diameter:	10-25 cm
Colour Temp.:	3800 - 4800k
Colour Rendering Index:	93 Ra
Focusing:	Manual
LED Average life:	>50000 Hrs.
Number of LED's:	60 x 2
Diameter of light:	690 mm
Intensity Control:	10~100 Digital
Power Supply:	220V/50Hz AC
Power Consumption:	48 + 48 watt
Special Function:	Dual Memory Function



*Operating Light Head*

## Technical Data

Intensity:	1,60,000 Lux
Satellite Intensity:	1,45,000 Lux
Spot Diameter:	100-150 mm
Depth Diameter:	10-25 cm
Colour Temp.:	3800 - 4800k
Colour Rendering Index:	93 Ra
Focusing:	Manual
LED Average life:	>50000 Hrs.
Number of LED's:	60 + 48
Diameter of light:	690mm
Intensity Control:	10~100 Digital
Power Supply:	220V/50Hz AC
Power Consumption:	48 + 38.4 watt
Special Function:	Dual Memory Function



*Operating Light Head*

## Technical Data

Intensity:	1,60,000 Lux
Satellite Intensity:	1,10,000 Lux
Spot Diameter:	100-150 mm
Depth Diameter:	10-25 cm
Colour Temp.:	3800 - 4800k
Colour Rendering Index:	93 Ra
Focusing:	Manual
LED Average life:	>50000 Hrs.
Number of LED's:	60 + 36
Diameter of light:	690mm
Intensity Control:	10~100 Digital
Power Supply:	220V/50Hz AC
Power Consumption:	48 + 28.8 watt
Special Function:	Dual Memory Function



*Operating Light Head*

## Technical Data

Intensity:	1,45,000 x 2 Lux
Spot Diameter:	100-150 mm
Depth Diameter:	10-25 cm
Colour Temp.:	3800 - 4800k
Colour Rendering Index:	93 Ra
Focusing:	Manual
LED Average life:	>50000 Hrs.
Number of LED's:	48 x 2
Diameter of light:	690 mm
Intensity Control:	10~100 Digital
Power Supply:	220V/50Hz AC
Power Consumption:	38.4 + 38.4 watt
Special Function:	Dual Memory Function



*Operating Light Head*

## Technical Data

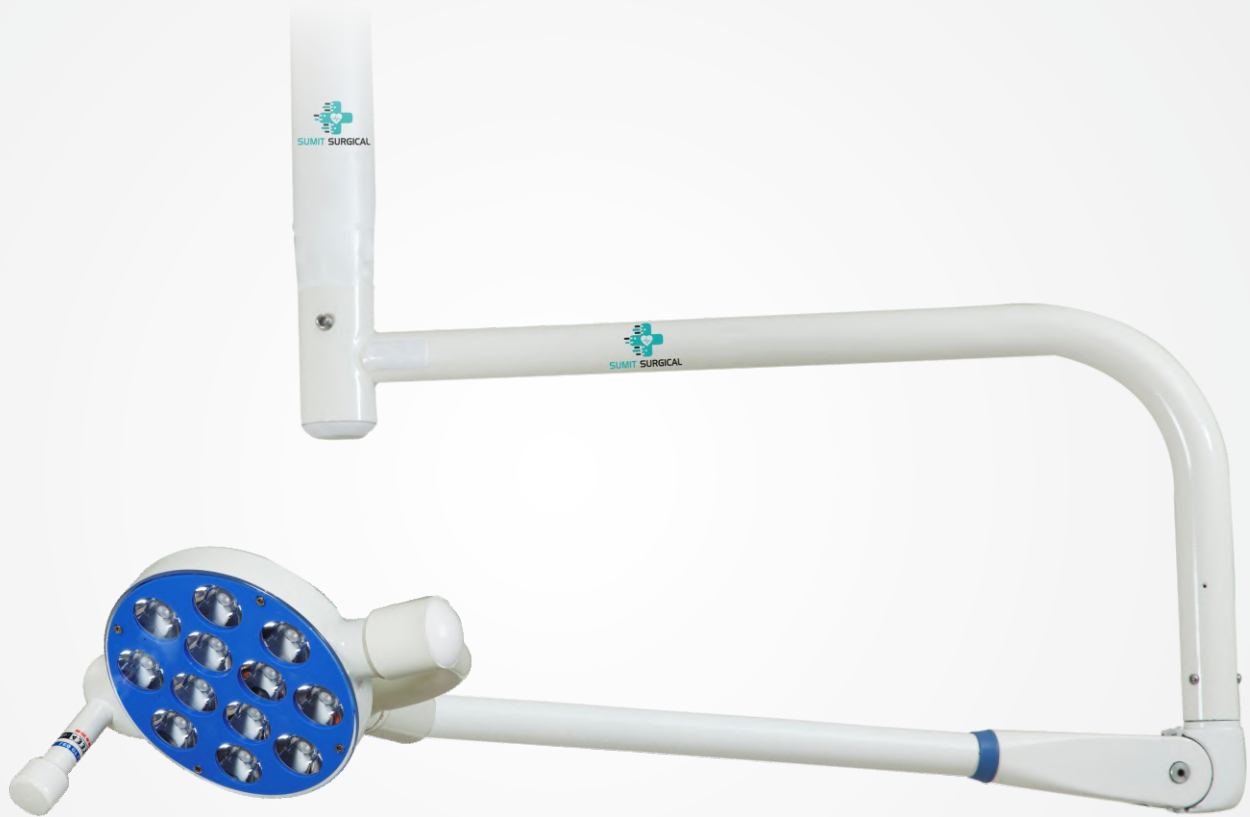
Intensity:	1,45,000 Lux
Satellite Intensity:	1,10,000 Lux
Spot Diameter:	100-150 mm
Depth Diameter:	10-25 cm
Colour Temp.:	3800 - 4800k
Colour Rendering Index:	93 Ra
Focusing:	Manual
LED Average life:	>50000 Hrs.
Number of LED's:	48 + 36
Diameter of light:	690mm
Intensity Control:	10~100 Digital
Power Supply:	220V/50Hz AC
Power Consumption:	38.4 + 28.8 watt
Special Function:	Dual Memory Function



*Operating Light Head*

## Technical Data

Intensity:	1,10,000 x 2 Lux
Spot Diameter:	100-150 mm
Depth Diameter:	10-25 cm
Colour Temp.:	3800 - 4800k
Colour Rendering Index:	93 Ra
Focusing:	Manual
LED Average life:	>50000 Hrs.
Number of LED's:	36 + 36
Diameter of light:	690mm
Intensity Control:	10~100 Digital
Power Supply:	220V/50Hz AC
Power Consumption:	28.8 + 28.8 watt
Special Function:	Dual Memory Function



*Operating Light Head*

## Technical Data

Intensity:	50,000 Lux
Spot Diameter:	100-150 mm
Depth Diameter:	10-25 cm
Colour Temp.:	3800 - 4800k
Colour Rendering Index:	91 Ra
Focusing:	Fix Focusing
LED Average life:	>50000 Hrs.
Number of LED's:	12
Diameter of light:	150mm
Intensity Control:	10~100 Digital
Power Supply:	220V/50Hz AC
Power Consumption:	12 watt
Special Function:	Dual Memory Function



*Operating Light Head*

## Technical Data

Intensity:	50,000 x 2 Lux
Spot Diameter:	100-150 mm
Depth Diameter:	10-25 cm
Colour Temp.:	3800 - 4800k
Colour Rendering Index:	91 Ra
Focusing:	Fix Focusing
LED Average life:	>50000 Hrs.
Number of LED's:	12 x 2
Diameter of light:	150mm
Intensity Control:	10~100 Digital
Power Supply:	220V/50Hz AC
Power Consumption:	12 + 12 watt
Special Function:	Dual Memory Function



Power Supply



Sterilizable Handle

## SSI-621 Series Operating Light

To meet the needs posted by modern surgery and each of its disciplines, we have developed innovative solutions. The homogeneous nature of ssi-621 series increase surgeon comfort in every place, large the operative field.



*Operating Light Head*

## Technical Data

Intensity:	1,70,000 Lux
Spot Diameter:	100-150 mm
Depth Diameter:	10-25 cm
Colour Temp.:	3800 - 4800k
Colour Rendering Index:	93 Ra
Focusing:	Manual
LED Average life:	>50000 Hrs.
Number of LED's:	82
Diameter of light:	690mm
Intensity Control:	10~100 Digital
Power Supply:	220V/50Hz AC
Power Consumption:	70.4 watt
Special Function:	Dual Memory Function



*Floor Model*

## Technical Data

Intensity:	1,70,000 Lux
Spot Diameter:	100-150 mm
Depth Diameter:	10-25 cm
Colour Temp.:	3800 - 4800k
Colour Rendering Index:	93 Ra
Focusing:	Manual
LED Average life:	>50000 Hrs.
Number of LED's:	82
Diameter of light:	690mm
Intensity Control:	10~100 Digital
Power Supply:	220V/50Hz AC
Power Consumption:	70.4 watt
Special Function:	Dual Memory Function



*Operating Light Head*

## Technical Data

Intensity:	1,25,000 Lux
Spot Diameter:	100-150 mm
Depth Diameter:	10-25 cm
Colour Temp.:	3800 - 4800k
Colour Rendering Index:	93 Ra
Focusing:	Manual
LED Average life:	>50000 Hrs.
Number of LED's:	57
Diameter of light:	690mm
Intensity Control:	10~100 Digital
Power Supply:	220V/50Hz AC
Power Consumption:	45.6 watt
Special Function:	Dual Memory Function



*Floor Model*

## Technical Data

Intensity:	1,25,000 Lux
Spot Diameter:	100-150 mm
Depth Diameter:	10-25 cm
Colour Temp.:	3800 - 4800k
Colour Rendering Index:	93 Ra
Focusing:	Manual
LED Average life:	>50000 Hrs.
Number of LED's:	57
Diameter of light:	690mm
Intensity Control:	10~100 Digital
Power Supply:	220V/50Hz AC
Power Consumption:	45.6 watt
Special Function:	Dual Memory Function



*Operating Light Head*

## Technical Data

Intensity:	1,70,000 x 2 Lux
Spot Diameter:	100-150 mm
Depth Diameter:	10-25 cm
Colour Temp.:	3800 - 4800k
Colour Rendering Index:	93 Ra
Focusing:	Manual
LED Average life:	>50000 Hrs.
Number of LED's:	82 x 2
Diameter of light:	690mm
Intensity Control:	10~100 Digital
Power Supply:	220V/50Hz AC
Power Consumption:	70.4 + 70.4 watt
Special Function:	Dual Memory Function



*Operating Light Head*

### Camera Specification

- Electronics image stabilizer Optical zoom 50X
- Max Video resolution 1920 x 1080
- Image processor crystal engine PRO
- Optical sensor size 1/5.5"
- Screen Resolution Full HD
- Easy connection automatically connect transmission delay
- Technical standard wireless HD1.1
- Bandwidth 7 GBPS
- Transmitting Frequency HDPS
- Crystal clear image
- Range upto 30 Mtr.
- Interface provided HDMI
- White Balance Auto

### Technical Data

Intensity:	1,70,000 x 2 Lux
Spot Diameter:	100-150 mm
Depth Diameter:	10-25 cm
Colour Temp.:	3800 - 4800k
Colour Rendering Index:	93 Ra
Focusing:	Manual
LED Average life:	>50000 Hrs.
Number of LED's:	82 x 2
Diameter of light:	690mm
Intensity Control:	10~100 Digital
Power Supply:	220V/50Hz AC
Power Consumption:	70.4 + 70.4 watt
Special Function:	Dual Memory Function



*Operating Light Head*

## Technical Data

Intensity:	1,70,000 Lux
Satellite Intensity:	1,25,000 Lux
Spot Diameter:	100-150 mm
Depth Diameter:	10-25 cm
Colour Temp.:	3800 - 4800k
Colour Rendering Index:	93 Ra
Focusing:	Manual
LED Average life:	>50000 Hrs.
Number of LED's:	82 + 57
Diameter of light:	690mm
Intensity Control:	10~100 Digital
Power Supply:	220V/50Hz AC
Power Consumption:	70.4 + 45.6 watt
Special Function:	Dual Memory Function



*Operating Light Head*

## Technical Data

Intensity:	1,25,000 x 2 Lux
Spot Diameter:	100-150 mm
Depth Diameter:	10-25 cm
Colour Temp.:	3800 - 4800k
Colour Rendering Index:	93 Ra
Focusing:	Manual
LED Average life:	>50000 Hrs.
Number of LED's:	57 x 2
Diameter of light:	690mm
Intensity Control:	10~100 Digital
Power Supply:	220V/50Hz AC
Power Consumption:	45.6 + 45.6 watt
Special Function:	Dual Memory Function



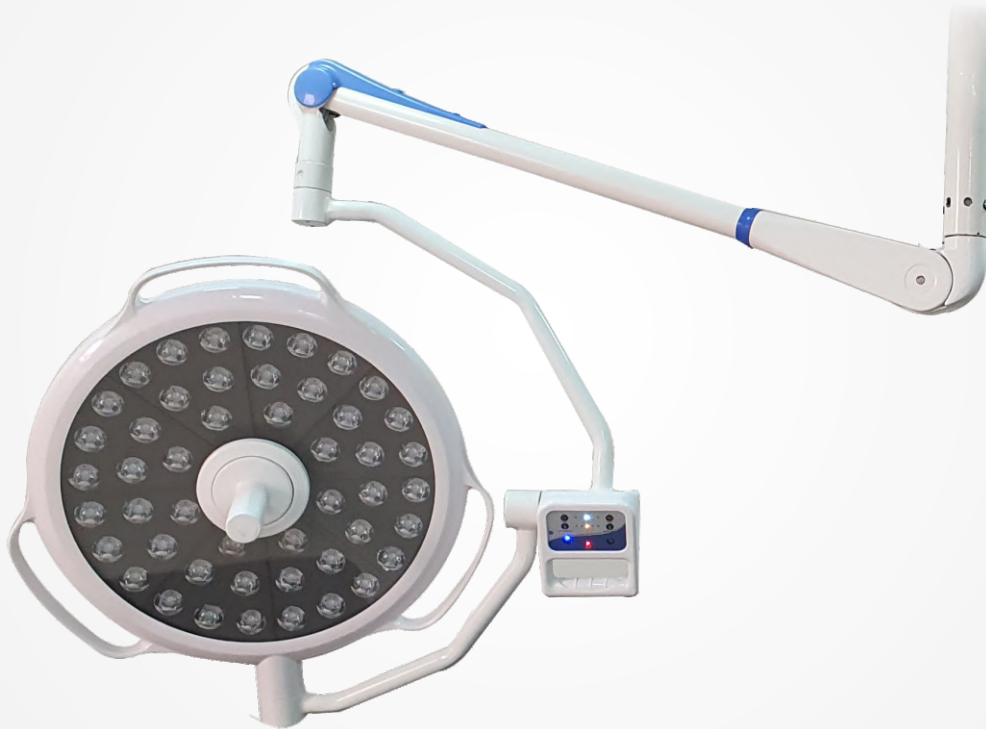
Capacitive Touch Panel



Sterilizable Handle

## SSI-109 Series Operating Light

SSI-109 series surgical lights use ultra slim use streamlined lamp head. Optional function: Shadow Compensation, handheld wireless remote controller; electrical light focus adjustment, mutual control for both lamp head, and other functions for your options.



*Operating Light Head*

## Technical Data

Intensity:	1,50,000 Lux
Spot Diameter:	100-150 mm
Depth Diameter:	10-25 cm
Colour Temp.:	3800 - 4800k
Colour Rendering Index:	93 Ra
Focusing:	Manual
LED Average life:	>50000 Hrs.
Number of LED's:	48
Diameter of light:	555 mm
Intensity Control:	10~100 Digital
Power Supply:	220V/50Hz AC
Power Consumption:	38.4 watt
Special Function:	Dual Memory Function



*Operating Light Head*

## Technical Data

Intensity:	1,50,000 x 2 Lux
Spot Diameter:	100-150 mm
Depth Diameter:	10-25 cm
Colour Temp.:	3800 - 4800k
Colour Rendering Index:	93 Ra
Focusing:	Manual
LED Average life:	>50000 Hrs.
Number of LED's:	48 + 48
Diameter of light:	555 mm
Intensity Control:	10~100 Digital
Power Supply:	220V/50Hz AC
Power Consumption:	38.4 + 38.4 watt
Special Function:	Dual Memory Function



*Floor Model*

## Technical Data

Intensity:	1,50,000 Lux
Spot Diameter:	100-150 mm
Depth Diameter:	10-25 cm
Colour Temp.:	3800 - 4800k
Colour Rendering Index:	93 Ra
Focusing:	Manual
LED Average life:	>50000 Hrs.
Number of LED's:	48
Diameter of light:	555 mm
Intensity Control:	10~100 Digital
Power Supply:	220V/50Hz AC
Power Consumption:	38.4 watt
Special Function:	Dual Memory Function



## SSSI-4H

## SSSI-4H



## SSSI-101R

## SSSI-4R





*Floor Model*

Sumit Surgical has developed new models of examination lights for minor surgery along with white & yellow Led LED combination. Unique & better quality portable stand for our valued customers. The floor model can easily be moved around the room to clear up space whenever needed.

## Technical Data

Intensity:	30,000 Lux
Articulated Arm Minimum:	70 cm
Length:	1.6 mtr
Colour Temp.:	3800 - 4800k
Colour Rendering Index:	91 Ra
Focusing:	Fix Focusing
LED Average life:	>50000 Hrs.
Number of LED's:	5
Diameter of light:	150 mm
Intensity Control:	10~100 Digital
Power Supply:	220V/50Hz AC
Power Consumption:	4 watt



*Floor Model*

Sumit Surgical has developed new models of examination lights for minor surgery along with white & yellow Led LED combination. Unique & better quality portable stand for our valued customers. The floor model can easily be moved around the room to clear up space whenever needed.

## Technical Data

Intensity:	50,000 Lux
Spot Diameter:	100-150 mm
Depth Diameter:	10-25 cm
Colour Temp.:	3800 - 4800k
Colour Rendering Index:	91 Ra
Focusing:	Manual
LED Average life:	>50000 Hrs.
Number of LED's:	12
Diameter of light:	150 mm
Intensity Control:	10~100 Digital
Power Supply:	220V/50Hz AC
Power Consumption:	9.6 watt

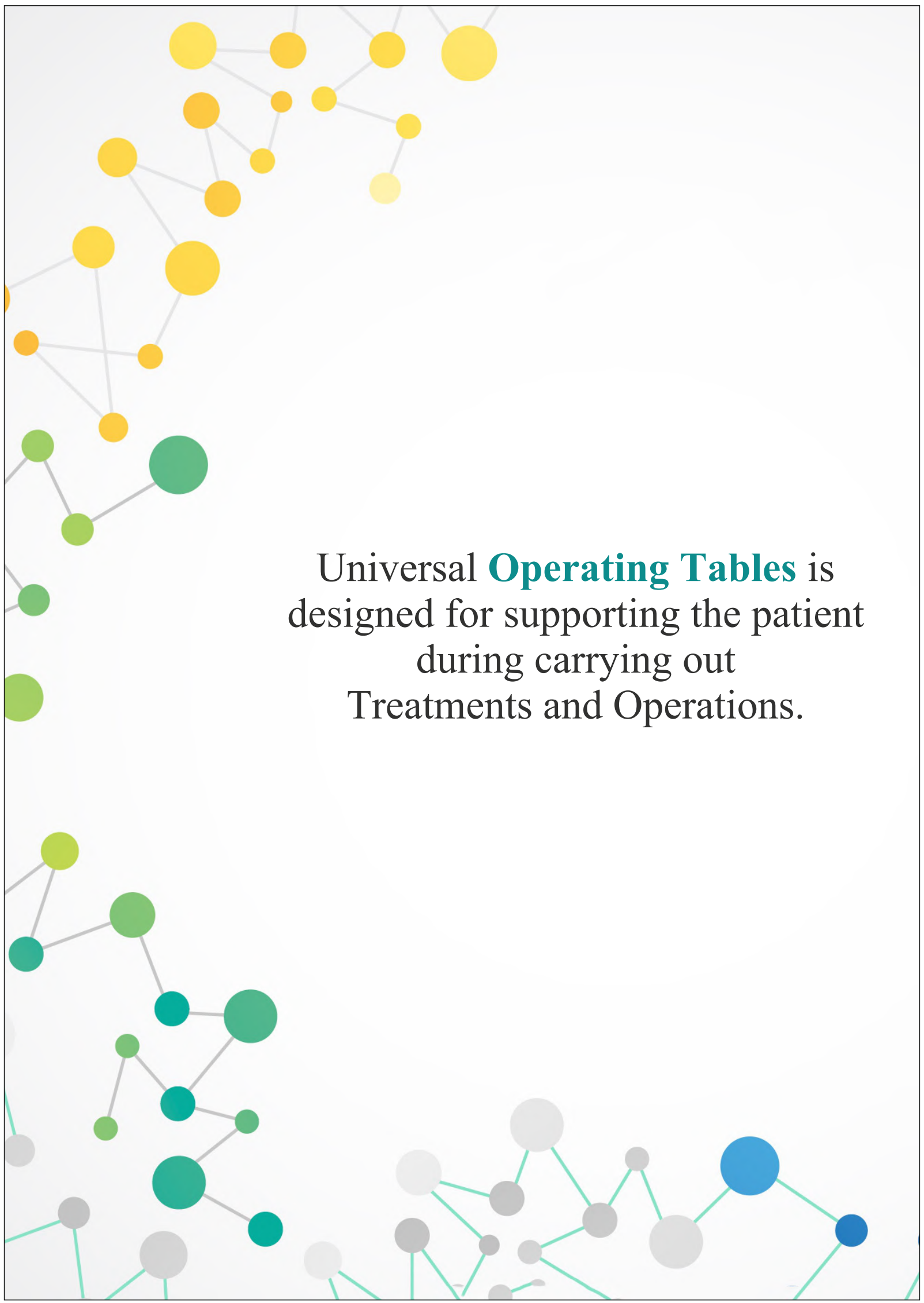


*Floor Model*

Sumit Surgical has developed new models of examination lights for minor surgery along with white & yellow Led LED combination. Unique & better quality portable stand for our valued customers. The floor model can easily be moved around the room to clear up space whenever needed.

## Technical Data

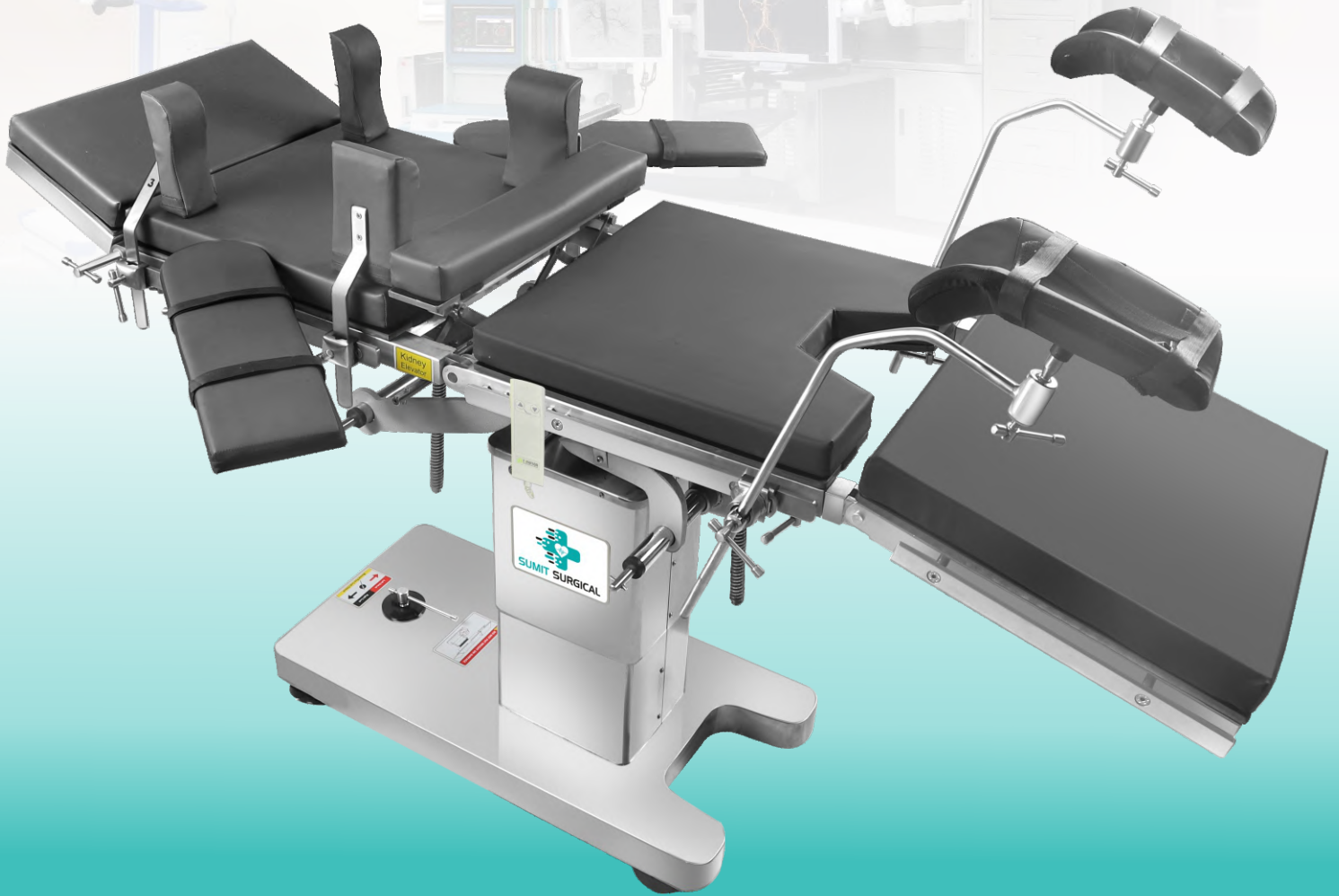
Intensity:	30,000 Lux
Spot Diameter:	100-150 mm
Depth Diameter:	10-25 cm
Colour Temp.:	3800 - 4800k
Colour Rendering Index:	91 Ra
Focusing:	Manual
LED Average life:	>50000 Hrs.
Number of LED's:	9
Diameter of light:	150 mm
Intensity Control:	10~100 Digital
Power Supply:	220V/50Hz AC
Power Consumption:	7.2 watt



Universal **Operating Tables** is  
designed for supporting the patient  
during carrying out  
Treatments and Operations.



**SUMIT SURGICAL**



# Quality Medical Equipment

---

**CAPTURING THE VALUE OF  
GOOD QUALITY IN MEDICAL DEVICES**



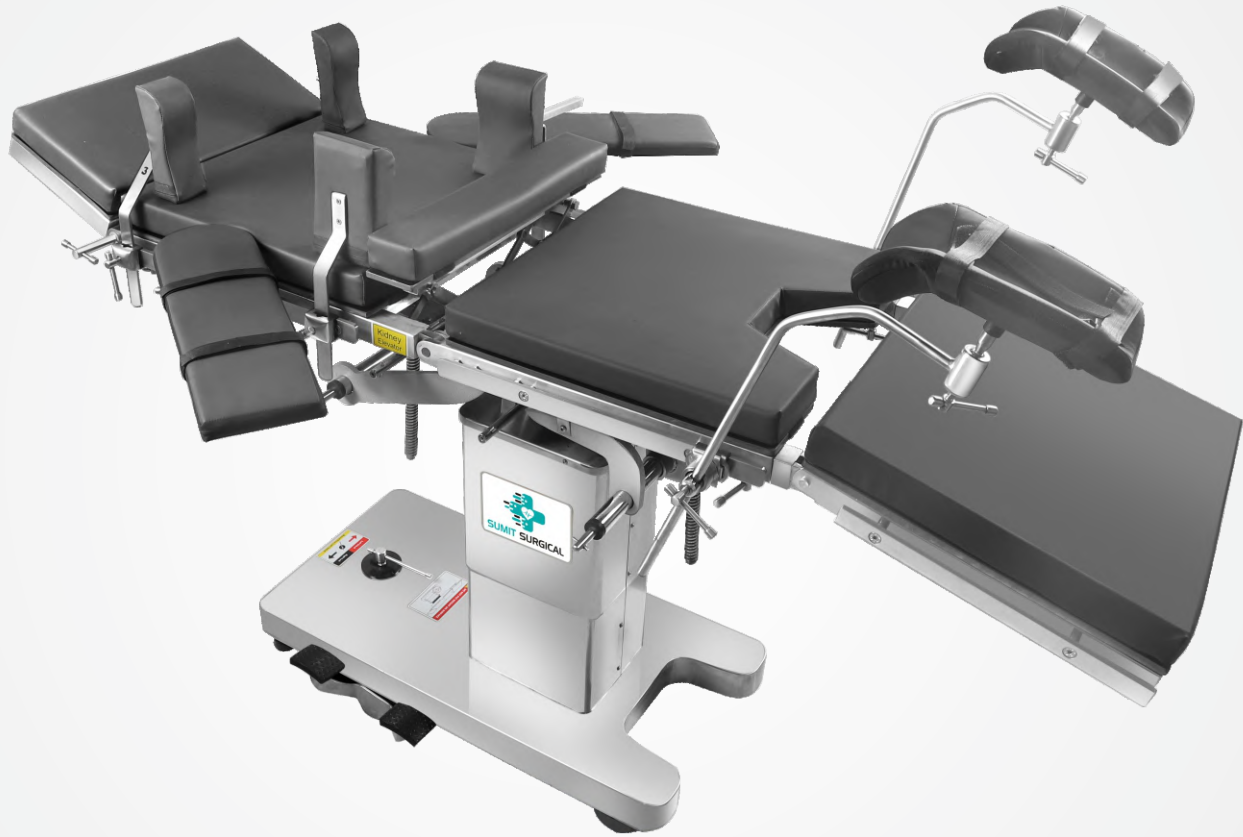
## Features:-

- Hydraulic and Mechanical Operated.
- Manual Mechanism for functioning and controlling the table.
- Centric base made from high quality stainless steel.
- LEG and HEAD SECTION are detachable and interchangeable.
- Inbuilt Kidney Bridge.
- Base and cover made of attractive, easy to clean stainless steel.
- Sophisticated mechanism provides smooth, stepless articulation of the table top for precise patient positioning.

## Technical Data:-

Top Dimension:	L 1900mm x W 520mm
Height Adjustment:	762mm -1000 mm
Trendelenburg / Reverse:	30° / 25°
Lateral Tilt:	20° / 20°
Kidney Elevator:	150mm
Back Rest (up / down):	80° / 20°
Leg Rest (up / down):	15° / 90°
Head Rest (up / down):	20° / 60°
Patient Weight Capacity:	150 Kgs

# Deluxe Hydraulic Operating Table (SSI-600H)

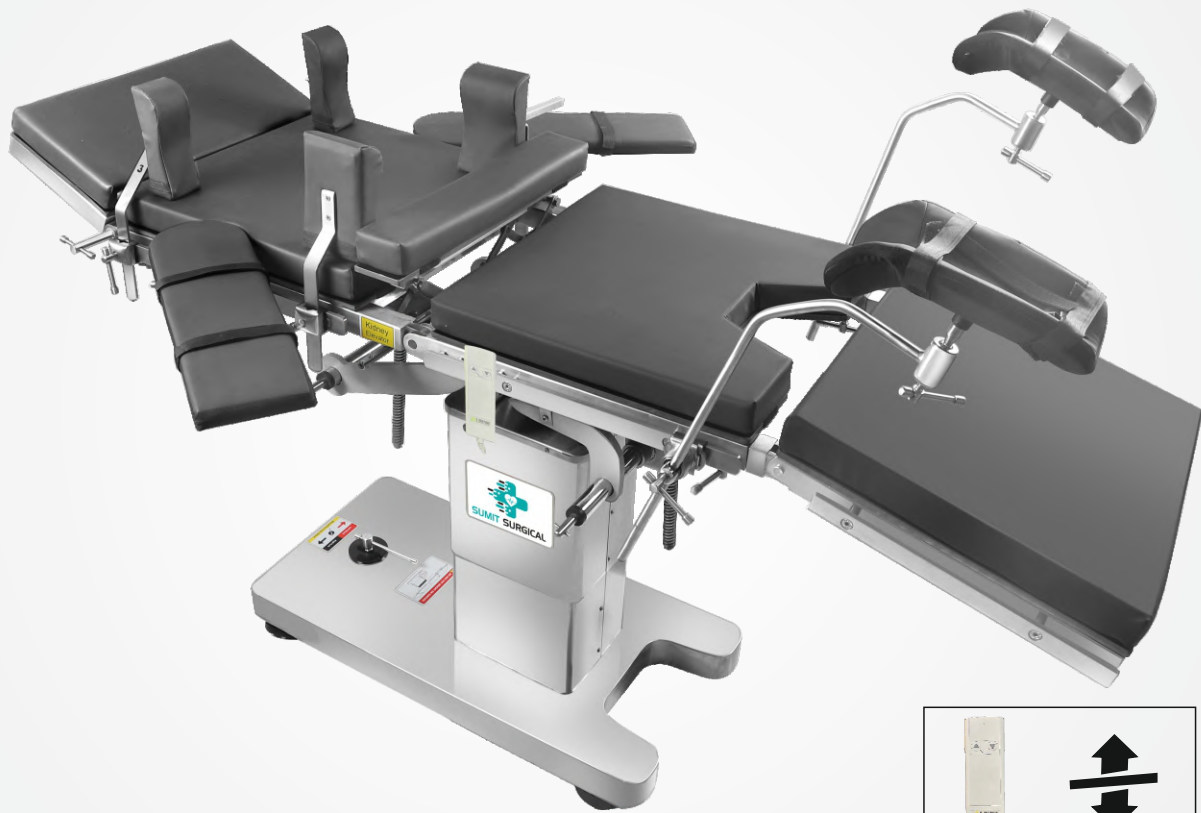


## Features:-

- Major part of table is made from 304 stainless steel grade to avoid rust.
- The five section stainless steel table top is equipped with removable, antistatic mattresses.
- All the positions are realized by a mechanical driver.
- The table is furnished with hard, robust stainless steel shell which provides the sense of dirt free & sanitized Operations
- Precision made hydraulic system with a single lever action hydraulic lift controlled by a foot panel.
- Inbuilt Kidney Bridge and large perinea cut out for drainage.
- Five section stainless steel top gives anatomic adaptation to the patient body.
- Manual Floor locking.

## Technical Data:-

Top Dimension:	L 1980mm x W 530mm
Height Adjustment:	762mm -1000 mm
Trendelenburg / Reverse:	30° / 25°
Lateral Tilt:	20° / 20°
Kidney Elevator:	130mm
Back Rest (up / down):	80° / 25°
Leg Rest (up / down):	10° / 90°
Head Rest (up / down):	45° / 90°
Patient Weight Capacity:	200 Kgs

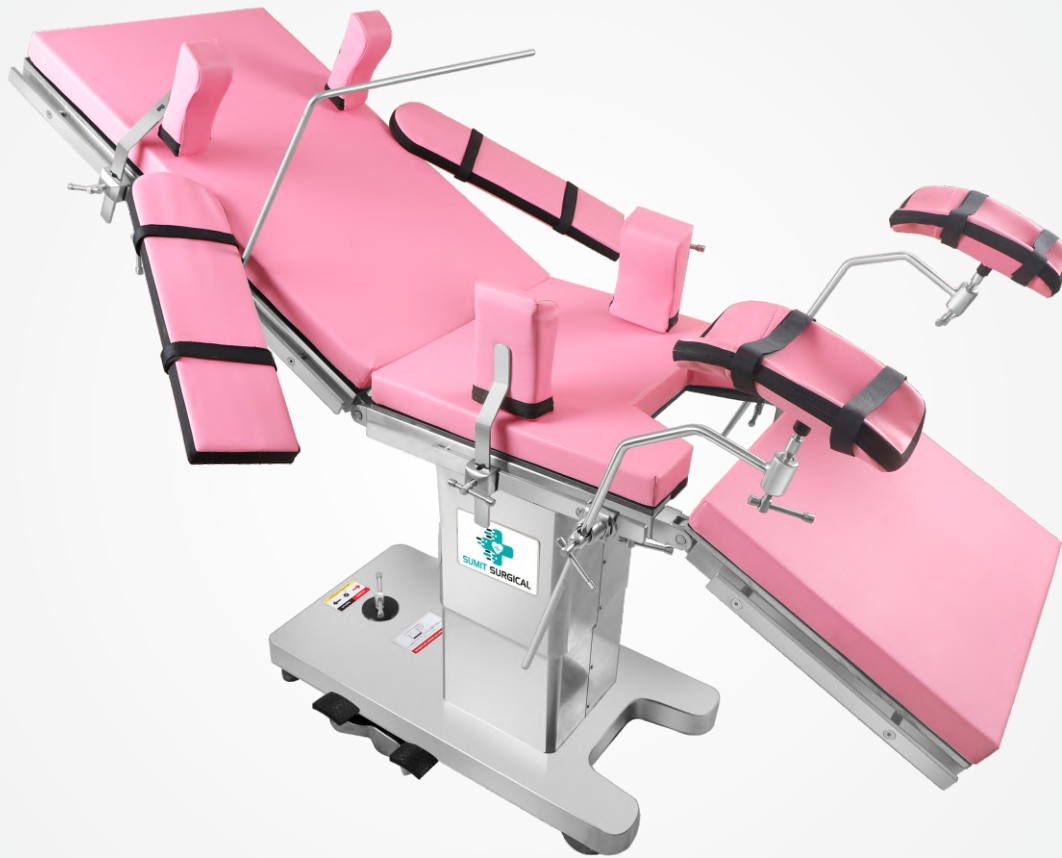


## Features:-

- Major part of table is made from 304 stainless steel grade to avoid rust.
- The five section stainless steel table top is equipped with removable, antistatic mattresses.
- All the positions are realized by a mechanical driver.
- The table is furnished with hard, robust stainless steel shell which provides the sense of dirt free & sanitized Operations
- Inbuilt Kidney Bridge and large perineal cut out for drainage.
- Five section stainless steel top gives anatomic adaptation to the patient body.
- Manual Floor locking.
- Up - Down Movement can be controlled through remote system.

## Technical Data:-

Top Dimension:	L 1980mm x W 530mm
Height Adjustment:	762mm -1000 mm
Trendelenburg / Reverse:	30° / 25°
Lateral Tilt:	20° / 20°
Kidney Elevator:	130mm
Back Rest (up / down):	80° / 25°
Leg Rest (up / down):	10° / 90°
Head Rest (up / down):	45° / 90°
Patient Weight Capacity:	200 Kgs
Mains Voltage Capacity:	AC 220V±10%50Hz



Gynaecology Hydraulic operating table is designed to provide accurate positioning while performing Obstetric Surgery. These tables are ideal for use in all the major surgical process that requires precision. We offer Gynaecology operating table in different models based on the requirements of the clients.

### **Special Features:-**

- Functional, Versatile, Flexibility and Precision.
- Hygienic design, Easy cleaning, User- friendly.
- Base & cover made of attractive easy to clean Stainless Steel.
- Four sectional radio-translucent top.



Gynae Basin

### **Technical Data:-**

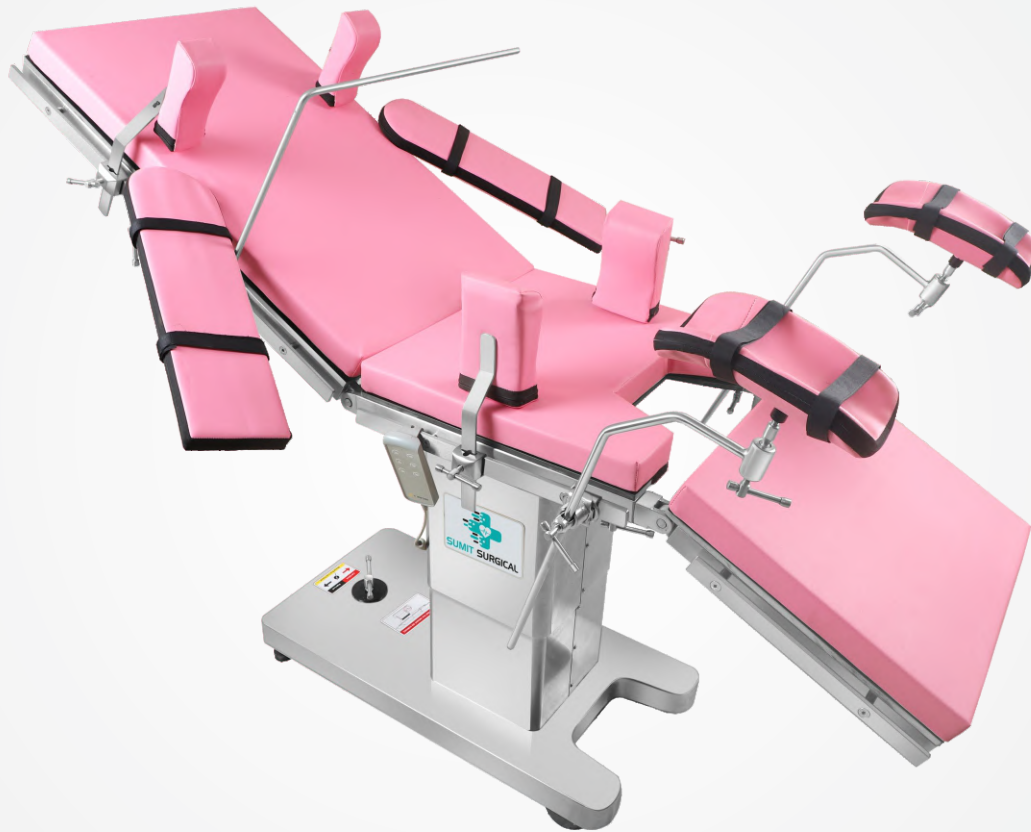
- |                           |                    |
|---------------------------|--------------------|
| • Top Dimension           | L 1980mm x W 530mm |
| • Height Adjustment       | 610mm - 860mm      |
| • Trendelenburg / Reverse | +30° / -20°        |
| • Back Plate(down/up)     | +70°               |
| • Patient weight capacity | 200 kgs            |



Birthing Handle

### **Standard Accessories:-**

- Body Support-2 pcs, Hand Rest-2 pcs, Lithotomy Crutches-2 pcs, Birthing Handle-2 pcs, Shoulder Support-1 pcs, Gynae Basin-1 pcs



Gynaecology Electric operating table is designed to provide accurate positioning while performing Obstetric Surgery. These tables are ideal for use in all the major surgical process that requires precision. We offer Gynaecology operating table in different models based on the requirements of the clients.

### **Special Features:-**

- Functional, Versatile, Flexibility and Precision.
- Hygienic design, Easy cleaning, User- friendly.
- Base & cover made of attractive easy to clean Stainless Steel.
- Four sectional radio-translucent top.



Gynae Basin

### **Technical Data:-**

- |                           |                    |
|---------------------------|--------------------|
| • Top Dimension           | L 1980mm x W 530mm |
| • Height Adjustment       | 610mm - 860mm      |
| • Trendelenburg / Reverse | +30° / -20°        |
| • Back Plate(down/up)     | +70°               |
| • Patient weight capacity | 200 kgs            |



Birthing Handle

### **Standard Accessories:-**

- Body Support-2 pcs, Hand Rest-2 pcs, Lithotomy Crutches-2 pcs, Remote, Birthing Handle-2 pcs, Shoulder Support-1 pcs, Gynae Basin-1 pcs

# Hydraulic C-Arm Operating Table SSI-800H (R-Base)



Also Available :



T-Base

## Features:-

- Hydraulic and Mechanical operated..
- Eccentric pillars, Stainless fitting.
- LEG and HEAD SECTION are interchangeable.
- Inbuilt Kidney Bridge.
- Detachable head, leg and pelvic section.
- Five sectional radio-translucent.
- Base and cover made of attractive, easy to clean stainless steel.
- The base is eccentric for trouble-free C-Arm movement

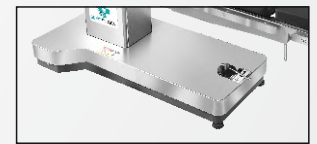
## Technical Data:-

Top Dimension:	L 1980mm x W 530mm
Height Adjustment:	740mm -1025 mm
Trendelenburg / Reverse:	30° / 25°
Lateral Tilt:	20° / 20°
Kidney Elevator:	130mm
Back Rest (up / down):	80° / 25°
Leg Rest (up / down):	10° / 90°
Head Rest (up / down):	45° / 90°
Patient Weight Capacity:	200 Kgs

# Semi Electric Operating Table SSI-800E (R-Base)



Also Available :



T-Base

## Features:-

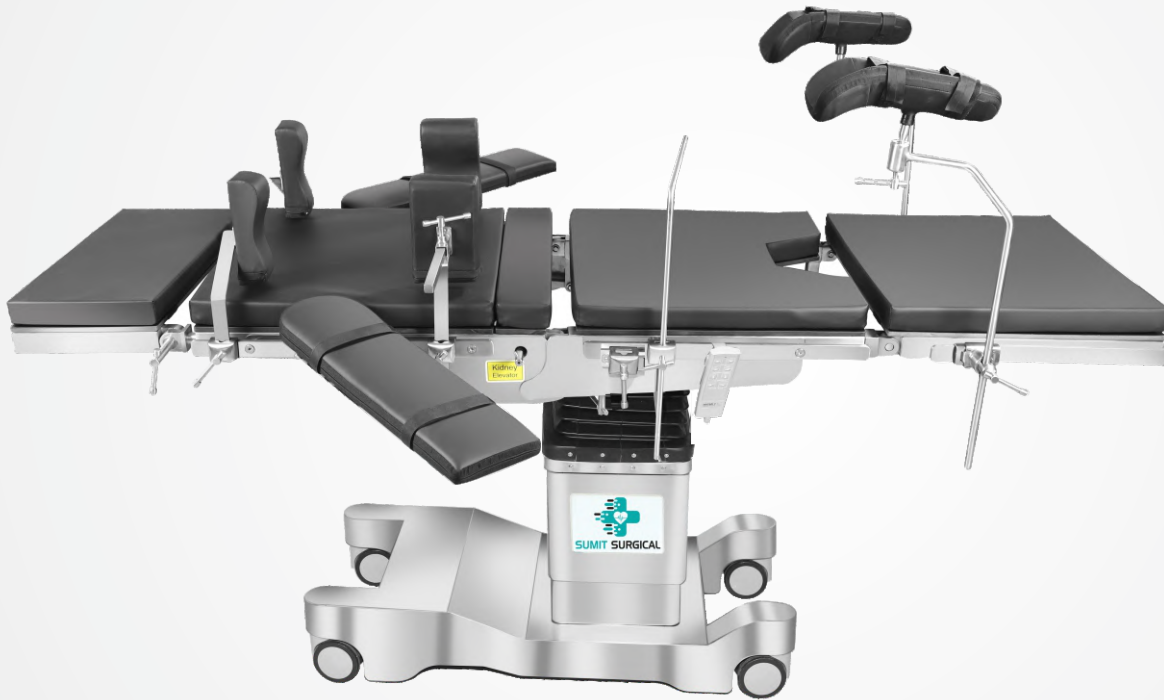
- The base is eccentric for trouble-free C-Arm movement
- Eccentric pillars, Stainless fitting.
- LEG and HEAD SECTION are interchangeable.
- Inbuilt Kidney Bridge.
- Detachable head, leg and pelvic section.
- Five sectional radio-translucent.
- Base and cover made of attractive, easy to clean stainless steel.
- Sophisticated mechanism provides smooth, stepless articulation of the table top for precise patient positioning.
- Up - Down Movement can be controlled through remote system.

## Technical Data:-

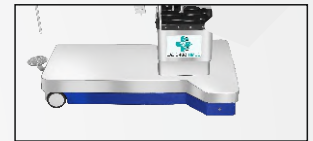
Top Dimension:	L 1980mm x W 530mm
Height Adjustment:	740mm -1025 mm
Trendelenburg / Reverse:	30° / 25°
Lateral Tilt:	20° / 20°
Kidney Elevator:	130mm
Back Rest (up / down):	80° / 25°
Leg Rest (up / down):	10° / 90°
Head Rest (up / down):	45° / 90°
Patient Weight Capacity:	200 Kgs
Mains Voltage Capacity:	AC 220V±10%50Hz

# Fully Electric Operating Table

## SSI-1000E (H-Base)



Also Available :



T-Base



C-Base



R-Base

### Features:-

- Fully Electrical operated table, five sections, radio-transparent table top with eccentric pillars and sturdy base.
- Interchangeable head and leg sections (manually).
- All positions operated through cable remote.
- In-built Kidney Bridge.
- Indication of Battery Back provided in the control panel.
- Major part of table made from super quality 304 stainless steel grade material.
- Heavy quality castor wheels
- Base and cover made of attractive, easy to clean stainless steel.

### Technical Data:-

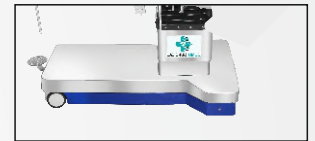
Top Dimension:	L 1900mm x W 530mm
Height Adjustment:	720mm -1020 mm
Trendelenburg / Reverse:	30° / 25°
Lateral Tilt:	20° / 20°
Kidney Elevator:	130mm
Back Rest (up / down):	80° / 20°
Leg Rest (up / down):	10° / 90°
Head Rest (up / down):	45° / 90°
Patient Weight Capacity:	200 Kgs
Mains Voltage Capacity:	AC 220V±10%50Hz

# Advance Electric Operating Table

## SSI-1500E (C-Base)



Also Available :



T-Base



H-Base



R-Base

### Features:-

- Fully Electrical operated table, five sections, radio-translucent table top with eccentric pillars and sturdy base.
- Interchangeable head and leg sections (manually).
- All positions operated through cable remote.
- In-built Kidney Bridge.
- Indication of Battery Back provided in the control panel.
- Major part of table made from super quality 304 stainless steel grade material.
- Heavy quality castor wheels
- Base and cover made of attractive, easy to clean stainless steel.

### Technical Data:-

Top Dimension:	L 1900mm x W 530mm
Height Adjustment:	750mm -1000 mm
Trendelenburg / Reverse:	30° / 25°
Lateral Tilt:	20° / 20°
Kidney Elevator:	130mm
Back Rest (up / down):	80° / 20°
Leg Rest (up / down):	10° / 90°
Head Rest (up / down):	45° / 90°
Patient Weight Capacity:	200 Kgs
Mains Voltage Capacity:	AC 220V±10%50Hz



Sumit Surgical presents **Ophthalmic OT Table** specially designed for minor and major ophthalmic surgeries.

### Features:-

- Ophthalmic OT Table has a maximum height of 1000 mm and minimum height of 760 mm.
- Ideal for standing table or sitting working position.
- It is an ideal operating table with the advantages of strong applicability, easy to operate.
- Adjusts conveniently and steady performance.
- Its ergonomic design ensures both surgeon and patient comfort.
- Patient comfort is assured with deep antistatic cushions which are easy to clean.
- The adjustable cushioned head-rest ensures doctor comfort and resistant during operations.

### Technical Data:-

Top Dimension:	L 1900mm x W 530mm
Height Adjustment:	760mm -1000 mm
Stroke Length:	250 mm
Trendelenburg / Reverse:	25° / 25°
Leg Section:	10° / 90°
Net Weight:	120 Kgs
Patient Weight Capacity:	200 Kgs



Sumit Surgical presents **Ophthalmic OT Table** specially designed for minor and major ophthalmic surgeries.

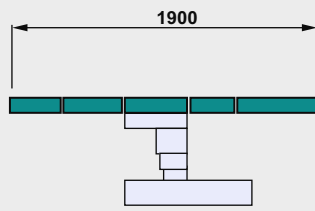
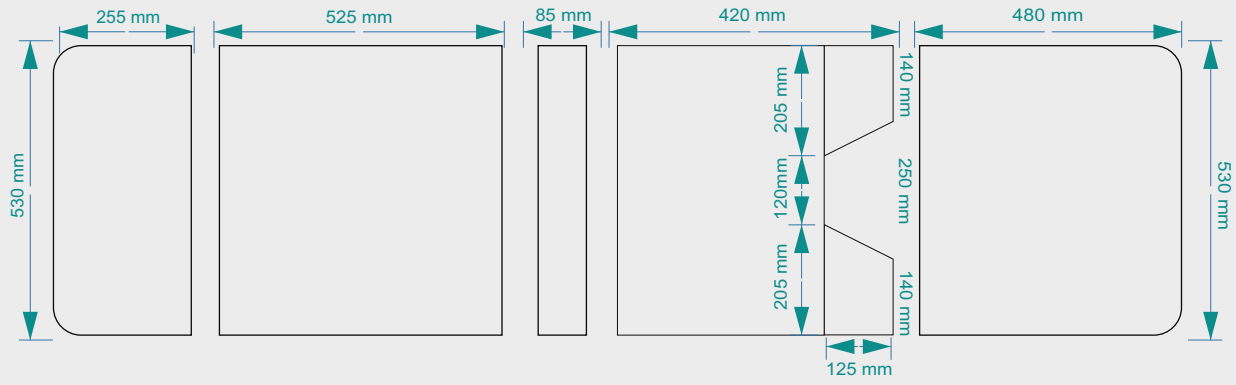
### Features:-

- Ophthalmic OT Table has a maximum height of 1000 mm and minimum height of 760 mm.
- Ideal for standing table or sitting working position.
- It is an ideal operating table with the advantages of strong applicability, easy to operate.
- Adjusts conveniently and steady performance.
- Its ergonomic design ensures both surgeon and patient comfort.
- Patient comfort is assured with deep antistatic cushions which are easy to clean.
- The adjustable cushioned head-rest ensures doctor comfort and resistant during operations.

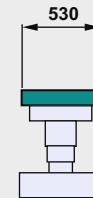
### Technical Data:-

Top Dimension:	L 1900mm x W 530mm
Height Adjustment:	760mm -1000 mm
Stroke Length:	250 mm
Trendelenburg / Reverse:	25° / 25°
Leg Section:	10° / 90°
Net Weight:	120 Kgs
Patient Weight Capacity:	200 Kgs

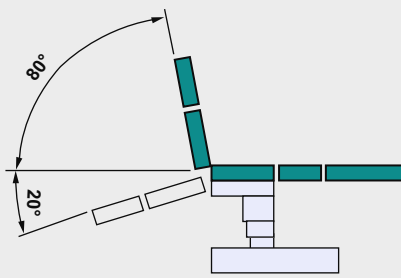
## Electric Table C-Arm (Measurement)



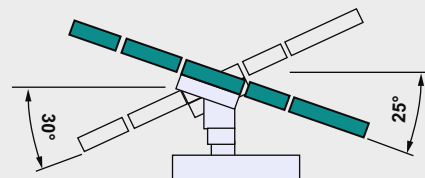
General Surgery



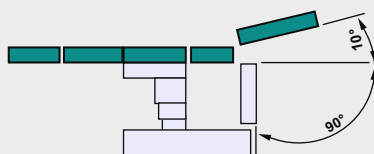
Lateral Tilt



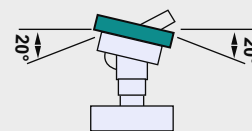
Lower Back Section up



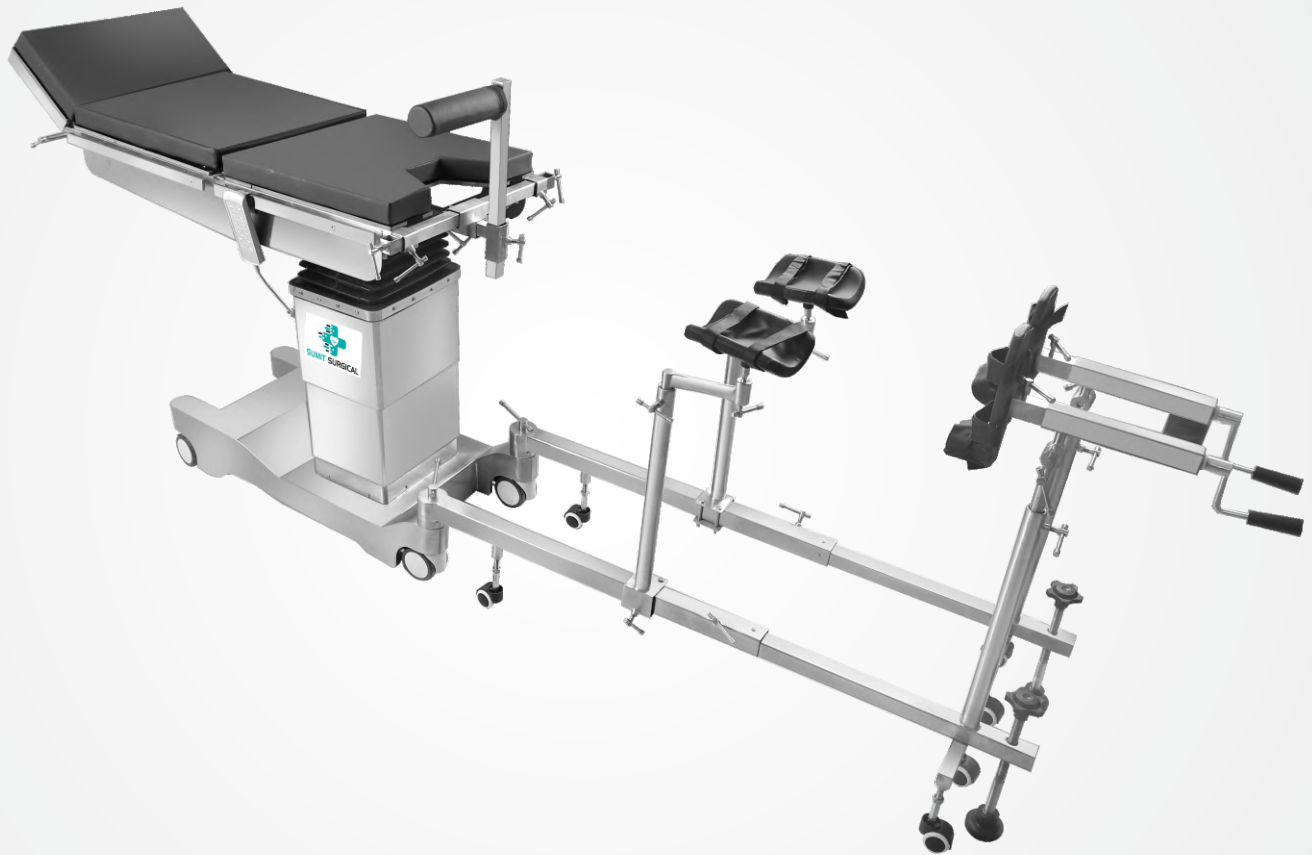
Trendelenburg



Leg Section up



Lateral Tilt Right



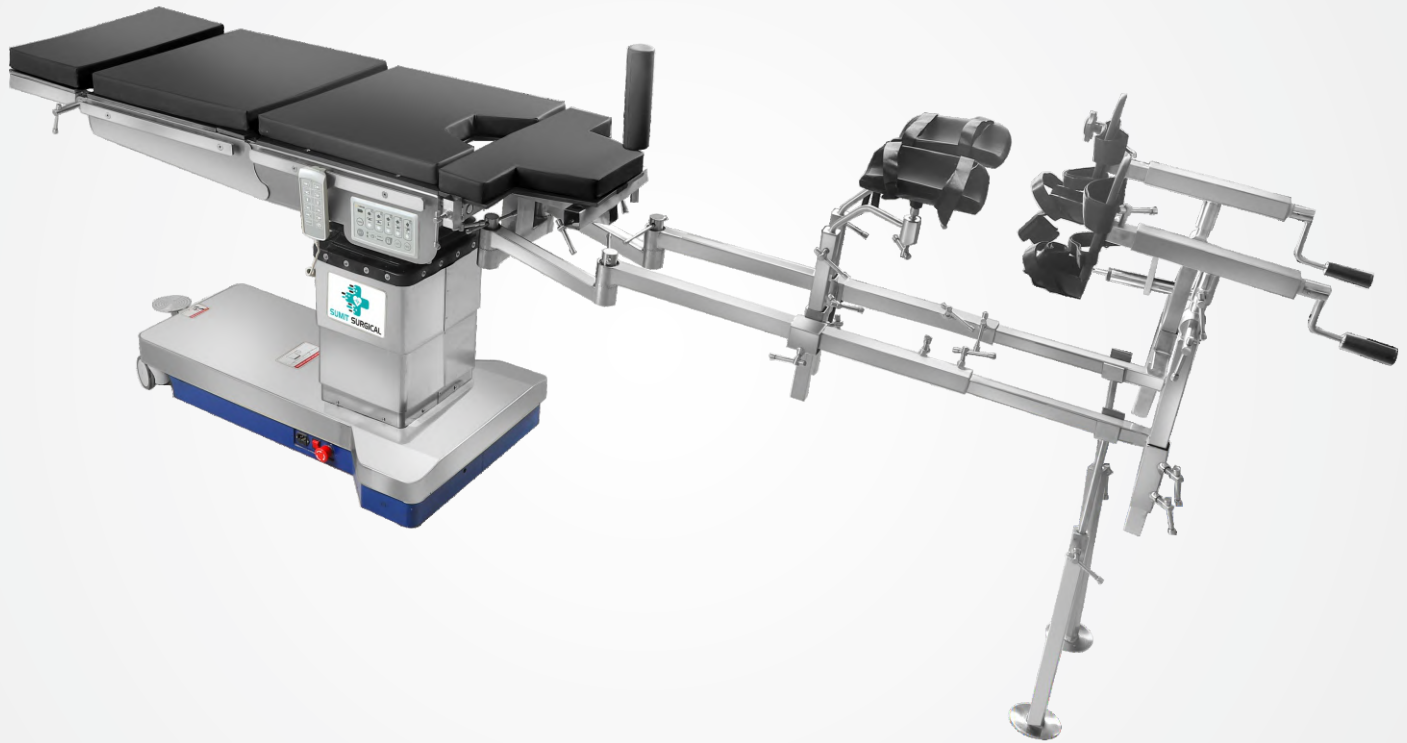
Ortho Attachment allow the table to be used to be used for the lower extremity procedures. Available at competitive prices our ortho attachments is purely made of stainless steel which resist corrosion.

### Key Specification:-

- This Orthopedic Extension device can be used with any operating table as it independently stands on the floor.
- Specially design for Intra Operative X-Ray photos & image intensifier set use.
- In addition, a pelvic support plate is supported on top of the frame and is formed with an asymmetrical construction. The pelvic support plate includes a cutout area on a front corner thereof permitting additional access to the affected leg of the patient. Removable Pelvic rest & X-ray translucent pelvic stem.
- Stirring Instruments allows Flexion/Raising of Legs & stirring/string ball joints locked from foot end.
- Two traction devices on sliding spot with ball joint allowing flexion & rotation of foot with traction shoe with metallic sole.
- Padded orthopedic knee Crutches/Provide support to the legs of the patient.
- Traction unit with supporter is so easily & collapsible that it require a very small place.
- The plate may be flipped over to position the cutout area on the opposite side of the patient, depending on the location of the affected leg.

### Accessories:-

- Knee Support - 1, Traction Boot - 2, Leg Rest - 2, Arm Board - 1, Pelvic Support - 1



Hanging Attachment allow the table to be used to be used for the lower extremity procedures. Available at competitive prices our ortho attachments is purely made of stainless steel which resist corrosion.

### Key Specification:-

- This Orthopedic Extension device can be used with any operating table as it independently stands on the floor.
- Specially design for Intra Operative X-Ray photos & image intensifier set use.
- In addition, a pelvic support plate is supported on top of the frame and is formed with an asymmetrical construction. The pelvic support plate includes a cutout area on a front corner thereof permitting additional access to the affected leg of the patient. Removable Pelvic rest & X-ray translucent pelvic stem.
- Stirring Instruments allows Flexion/Raising of Legs & stirring/string ball joints locked from foot end.
- Two traction devices on sliding spot with ball joint allowing flexion & rotation of foot with traction shoe with metallic sole.
- Padded orthopedic knee Crutches/Provide support to the legs of the patient.
- Traction unit with supporter is so easily & collapsible that it require a very small place.
- The plate may be flipped over to position the cutout area on the opposite side of the patient, depending on the location of the affected leg.

### Accessories:-

- Knee Support - 1, Traction Boot - 2, Leg Rest - 2, Arm Board - 1, Pelvic Support - 1



We offer a supreme range of Neuro Attachment, which is suitable for brain surgery. This Neuro attachment has been developed & manufactured with innovative quality to meet the demanding needs of Neurosurgeons. These neuro surgery attachments provide neuro surgeons stable and excellent support as they perform different medical procedures. These neuro surgery attachments are very durable made from excellent quality stainless steel and other materials.

## Key Specification:-

- Fully electrically operated table, five sections, radio-translucent table top with eccentric pillars and Die Compressed base.
- Interchangeable head and leg sections (manually).
- All positions operated through cable remote.
- Electric floor locking. (Optional)
- Inbuilt kidney bridge.
- Auto leveling (zero function).
- We are providing two Handsets. Additional fixed control panel provided on the table top, which can be used in case of failure of main hand set.
- Indication of Battery Back provided in the hand set.
- Handset is providing Dual Memory Function which can be set and reset.

## Technical Data:-

Top Dimension:	L 1900mm x W 522mm
Height Adjustment:	750mm -1000 mm
Kidney Elevator:	130 mm
Trendelenburg / Reverse:	30° / 25°
Lateral Tilt:	20° / 20°
Back Rest(Up/Down):	60° / 25°
Leg Rest(Up/Down)	15° / 90°
Head Rest(Up/Down)	20° / 60°
Power Supply	24 V DC
Battery Backup	2-3 Hours (optional)
Mains Voltage Capacity	AC 220V±10%50Hz

## Technical Data:-



Horse Shoe Positions



Sujita Head Fixator & Skull Pins



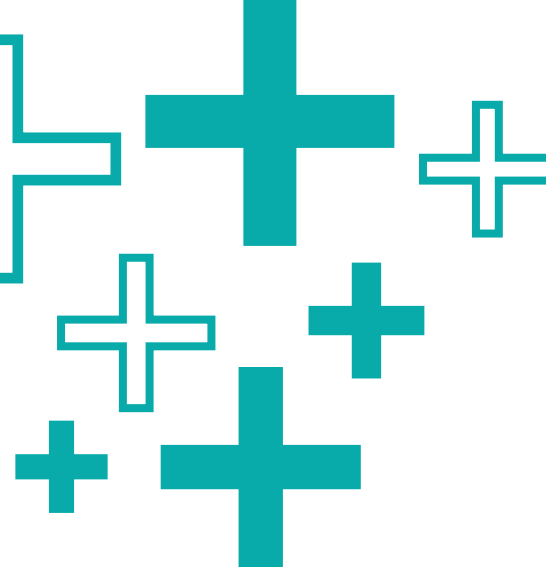
3 Pin Skull Fixator



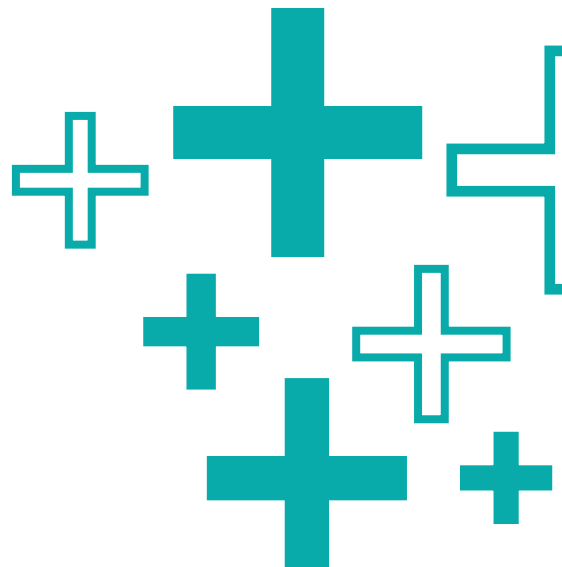
Horse Shoe



Fixator for Sitting Positions



“ The right  
**Medical Equipments**  
Makes Medicine  
practice *Faster* and *Easier* ”





## Features:-

- Adopting oil-free piston pump.
- Clean-without pollution of oil and smoke.
- Convenient-no need add oil to maintain daily.
- Safe-no plus pressure during using.
- Complete plastic panels, hand-switch and foot-switch for operating easily.
- Select negative pressure at will with no level for pressure adjustment, and overflow protection mechanism, safe and reliable.
- Not suitable for continuous use in the induced abortions and for the inflammable or explodable surroundings.

## Product Description:-

- |  |  |
|--|--|
| • Operation Mode: Automatic                | • Dimensions: 400x355x600 mm (LxWxH)                       |
| • Model Name/Number: 7A 25D                | • Max Vacuum: 90 KPa                                       |
| • Pump Type: Piston Pump                   | • Tube Material: Silicone Pipe                             |
| • Voltage: AC 220V $\pm$ 22V               | • Power: $\leq$ 180VA                                      |
| • Number Of Wheels: 4 Wheels               | • Pumping Rate: $\geq$ 20 L/m                              |
| • Frequency: 50 Hz $\pm$ 1 Hz              | • Reservoir Capacity: 2500 ml                              |
| • Glass Jar Capacity: 2500 ml              | • Max Continuous Working Time is: 30 min                   |
| • Number Of Glass Jars: 2 Jars             | • Continuity Rate: 50%                                     |
| • Noise: $\leq$ 65 dB (A)                  | • Power Source: Electric                                   |
| • Weight: 14 kg                            | • Electrical Appliance Safety Requirement: Class I, Type B |
| • Max Negative Pressure Value: $>0.09$ MPa |  |



## Features:-

- Adopting oil-free piston pump.
- Clean-without pollution of oil and smoke.
- Convenient-no need add oil to maintain daily.
- Safe-no plus pressure during using.
- Complete plastic panels, hand-switch and foot-switch for operating easily.
- Select negative pressure at will with no level for pressure adjustment, and overflow protection mechanism, safe and reliable.
- Not suitable for continuous use in the induced abortions and for the inflammable or explodable surroundings.

## Product Description:-

- |  |  |
|--|--|
| • Operation Mode: Automatic                | • Dimensions: 400x355x600 mm (LxWxH)                       |
| • Model Name/Number: 7A 35D                | • Max Vacuum: 90 KPa                                       |
| • Pump Type: Piston Pump                   | • Tube Material: Silicone Pipe                             |
| • Voltage: AC 220V $\pm$ 22V               | • Power: $\leq$ 180VA                                      |
| • Number Of Wheels: 4 Wheels               | • Pumping Rate: $\geq$ 20 L/m                              |
| • Frequency: 50 Hz $\pm$ 1 Hz              | • Reservoir Capacity: 2500 ml                              |
| • Glass Jar Capacity: 2500 ml              | • Max Continuous Working Time is: 30 min                   |
| • Number Of Glass Jars: 2 Jars             | • Continuity Rate: 50%                                     |
| • Noise: $\leq$ 65 dB (A)                  | • Power Source: Electric                                   |
| • Weight: 14 kg                            | • Electrical Appliance Safety Requirement: Class I, Type B |
| • Max Negative Pressure Value: $>0.09$ MPa |  |



### Features:-

- Adopting oil-free piston pump.
- Clean-without pollution of oil and smoke.
- Convenient-no need add oil to maintain daily.
- Safe-no plus pressure during using.
- No flow backwards pressure when the machine stops, so the liquid won't flow backwards.

### Technical Data :

- Model Name/Number: 7A 35D
- Noise:  $\leq 65$  dB (A)
- Pumping Rate:  $\geq 10$  L/m
- Glass Jar Capacity: 1000 ml
- Number Of Glass Jars: 1 Jars
- Not suitable for continuous use in the induced abortions and for the inflammable or explodable surroundings.
- Electric appliance safety requirement : Class I, Type B



Clean Air



Easy  
Movement



Compact  
Design



Multi Level  
Filtration

## Product Description:-

Owing to our experience of this domain, we provide the finest quality of Air Compressor Ideal air source for various kind of ventilators, the air compressor is equipped with visual alarm and audible alarm. Use for delivery of clean and dry compressed air in the ventilators, the air compressor is known for dehydration design.

## Features:-

- Multi-level filtration
- Adopting highly efficient oil-free compressor core.
- For safety, the compressor is equipped with audio and visual alarm.

## Other Details :-

- A compact medical grade air compressor intended for the delivery of clean and dry compressed air.
- Adopting highly efficient oil-free compressor core and multi level filtration and dehydration design.
- Our compressors are compatible with all the ventilators (external air source) and are very inexpensive. Our compressors have been running successfully with all the leading brands of ventilators like Macquet, Drager, Covidian, Viasys, Siemens, Bird, Puritan Bennett, Takaoka, SLE etc.



Clean Air



Low  
Noise & Vibration



Easy  
Movement



Compact  
Design



Multi Level  
Filtration

## Product Description:-

Owing to our experience of this domain, we provide the finest quality of Air Compressor Ideal air source for various kind of ventilators, the air compressor is equipped with visual alarm and audible alarm. Use for delivery of clean and dry compressed air in the ventilators, the air compressor is known for dehydration design.

## Features:-

- Multi-level filtration
- To Control the Sound and Vibration advance technology of double insulation.
- Inbuilt Thomas motor.
- With addition Fan Cooling.
- Pressure can be adjusted (High / Low) with Regulator.
- High Capacity Air Storage Cylinders.
- Lockable wheels. (4 castor wheels).
- Adopting highly efficient oil-free compressor core.
- For safety, the compressor is equipped with audio and visual alarm.

## Other Details:-

- A compact medical grade air compressor intended for the delivery of clean and dry compressed air
- Adopting highly efficient oil-free compressor core and multi level filtration and dehydration design.
- Our compressors are compatible with all the ventilators (external air source) and are very inexpensive. Our compressors have been running successfully with all the leading brands of ventilators like Macquet, Drager, Covedian, Viasys, Siemens, Bird, Purittan Bennett, Takaoka, SLE etc.

## Technical Data:-

Voltage And Frequency	220 VAC+/-50/60 Hz
Compressor Efficiency	55 I.min- 1/3, 5 bar
Air tent capacity	2 Lit.
Peak flow at Pressure 3 Bar	200 I. min-1/3 bar
Filtration of air	5 µm
Motor	Thomas
Dew point depression at 40 Lit. min-1,20°	C5°C under the ambient temperature
Outlet connection	Diss1160-A(3/4"-16 NUF)
Mode of the operation	Continuous
Automatic back-up to central pipeline	On request
Noise Level	≤ 49 dB [A]

(Optional :- Stand for Ventilator)





Knob



Button Ramp



Mute



Outlet Air

## Specification:-

- Mute Button: Press this button to mute the alert. Hold it for 3s, check iCode
- Knob: Start treatment and adjust device setting. Indicate the power supply
- Button Ramp: Enable the Ramp Feature
- Outlet Air: Deliver humidified air to the patient; connect to the air tubing.
- Observation Window: Observe the water level in the water chamber
- Water Inlet: The water inlet is in the bottom of the water storage tank
- Color Screen With Auto On/Auto Off
- Auto Adjustment Of Therapy Pressure Within Set Range
- One Button To Review The Treatment Information Of Last Day
- Real Time Audible Alert For Tubing/Mask Leak





### Specification:-

- 5.6" high resolution LED screen with color grid background
- 1.2 kgs weight, compact design, convenient to carry
- Scratchable latex keyword Design
- Three pronged ECG leads, effectively reduce winding
- Support Z-fold and roll thermal recording paper

### Excellent Performance:-

- Digital sampling rate: 32000Hz
- A/D converter: 24 bits
- 1s baseline stability
- Frequency response: 0.01-350Hz
- Support double pole pacemaker detection
- Support hierarchical gain
- 12 leads simultaneous acquisition
- LAN connection
- Support workstation
- Original i-filter adaptive filtering technology has greatly improved the ECG signal quality

### Accessories:-



### Powerful Network Features:-

- Support peripherals: USB, SD card, Scanner, Laser printer, Card reader
- Support formats: H17, XML, SCP, PDF, DICOM, ZQECG



Also Available :



Dual Arm



Double Arm

### Specification:-

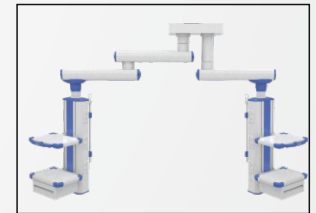
- The activity range of Horizontal arm radius 1000mm, horizontal arm and functional box can be simultaneously rotated, each horizontal rotation angle 340°.
- Functional box vertical lifting stroke 250 ~ 600mm. Motor power 100W
- The rotary joint has oxygen balloon expandable isolation brakes, just hold down the brake button on the device to easily rotate, release the button to secure the device no drift.
- The gas terminal interface standard configuration: oxygen 2pcs, suction 2pcs;
  - I.) Different colors and shapes,
  - ii.) more than 20,000 times mating cycles;
  - iii.) using the secondary seal, with three states (on, off , pull) can carry air service;
- Instrument platform: two layers (height adjustable); rounded bumper design, each platform can load 20kg;
- Weight loading: 150kg;
- Power supply: AC220V, 50HZ; AC110V, 60HZ
- Electrical outlet: 6 pcs (220V / 10A);
- Potential ground terminal: 2pcs;
- The network interface: RJ45 1pc;
- Drawer: 1pc;
- Syringe pump rack 1pc, infusion pump rack 1pc;
- The main material: high-strength aluminium alloy;
- The surface treatment using imported high-voltage electrostatic powder spray;



Also Available :



Dual Arm



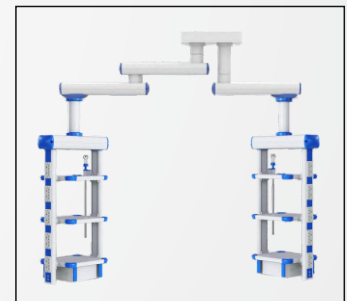
Double Arm

### Specification:-

- The activity range of Horizontal arm radius 1000mm, horizontal arm and pendant base can be simultaneously rotated, each horizontal rotation angle 340°.
- The gas terminal interface standard configuration: oxygen 2pcs, suction 2pcs;
  - I.) Different colors and shapes,
  - ii.) more than 20,000 times mating cycles;
  - iii.) using the secondary seal, with three states (on, off , pull) can carry air service;
- Instrument platform: two layers (height adjustable); rounded bumper design, each platform can load 20kg;
- Weight loading: 150kg;
- Electrical outlet: 6 pcs (220V / 10A);
- Potential ground terminal: 2pcs;
- Drawer: 1pc;
- Syringe pump rack 1pc, infusion pump rack 1pc;
- The main material: high-strength aluminium alloy;
- The surface treatment using imported high-voltage electrostatic powder spray;



Also Available :



Double Arm

### Specification:-

1. Gas interface configuration (2 oxygen, 2 vacuum suction, 2 compressed air):
  - a. The interface color and shape are different, with anti-missing function;
  - b. The number of insertions and removals is more than 20,000 times;
  - c. Use secondary sealing, with three states (on, off, pull), with gas maintenance;
2. Power socket: 10, 220V, 10A;
3. Equipotential grounding terminal: 2;
4. One stainless steel adjustable infusion rod holder;
5. One stainless steel adjustable syringe pump frame;
6. The main material is made of high-strength aluminum alloy profiles;
7. The surface treatment is electrostatic spraying; ceiling-mounted installation, stable and firm.
8. One storage item

### Technical Parameters: Single Arm Mechanical

1. Working power: AC220V, 50Hz;
2. Cross arm range of motion (radius): 700-1800mm (can be configured according to hospital requirements)
3. Horizontal rotation angle: 0 ~ 340 °, the cross arm and the terminal box can be rotated horizontally or simultaneously;
4. The net load weight is  $\geq 120\text{kg}$ ;
5. Instrument platform: 3 layers (height adjustable) optional 490mm \* 360mm \* 47mm or 550mm \* 400mm \* 47mm; with 10mm × 25mm side rail enclosure, rounded bumper design



## Specification:-

- Functional box vertical lifting stroke 250 ~ 600mm. Motor power 100W
- The rotary joint has oxygen balloon expandable isolation brakes, just hold down the brake button on the device to easily rotate, release the button to secure the device no drift.
- The gas terminal interface standard configuration: oxygen 2pcs, suction 2pcs;
  - I.) Different colors and shapes,
  - ii.) more than 20,000 times mating cycles;
  - iii.) using the secondary seal, with three states (on, off , pull) can carry air service;
- Instrument platform: two layers (height adjustable); rounded bumper design, each platform can load 20kg;
- Weight loading: 150kg;
- Power supply: AC220V, 50HZ; AC110V, 60HZ
- Electrical outlet: 6 pcs (220V / 10A);
- Potential ground terminal: 2pcs;
- The network interface: RJ45 1pc;



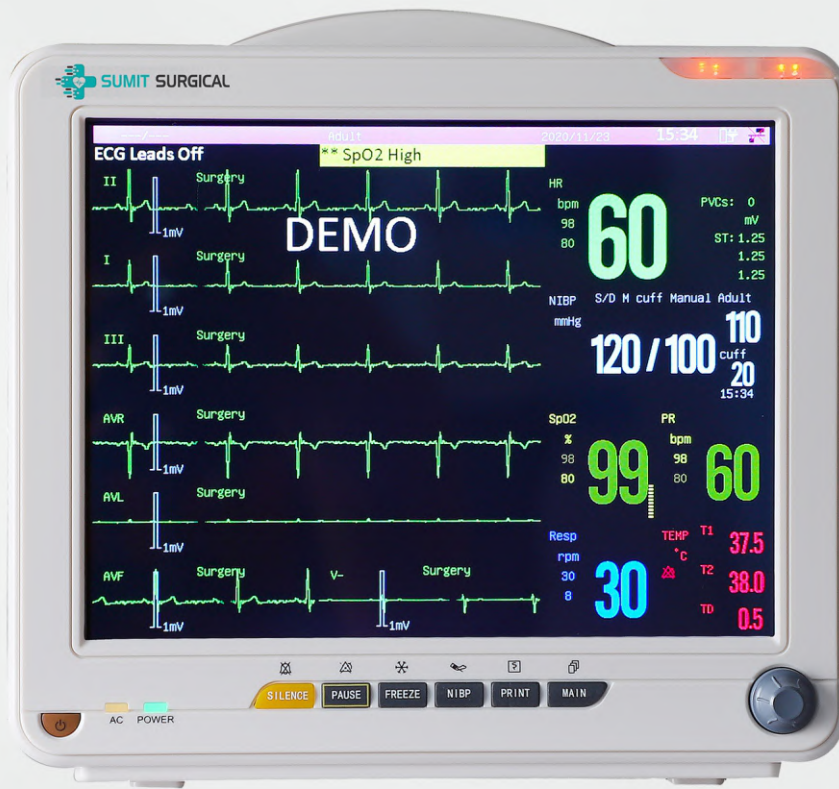
5 Para Patient Monitor

12.1inch LED Display

ECG, Spo2, NIBP, TEMP, RESP, PR

### Technical Specification:-

- 12.1" color TFT LCD screen with multi channel waveforms display
- Rechargeable Lithium high energy built in Battery
- Easy to learn,easy to use, simplified menus and delicated functions keys
- Easy connection with central monitoring system
- 96 hours data storage
- Suitable for adult, pediatrics and neonates



5 Para Patient Monitor

12.1inch LED Display

ECG, Spo2, NIBP, TEMP, RESP, PR

### Technical Specification:-

- 12.1" color TFT LCD screen with multi channel waveforms display
- Rechargeable Lithium high energy built in Battery
- Easy to learn,easy to use, simplified menus and delicated functions keys
- Easy connection with central monitoring system
- 96 hours data storage
- Suitable for adult, pediatrics and neonates



5 Para Patient Monitor

12.1inch LED Display

ECG, Spo2, NIBP, TEMP, RESP, PR

### Technical Specification:-

- 12.1 inch high brightness Long life LED display, optional touch screen
- Lightweight and quick-hook design, simple fix on poles less than 30mm in diameter.
- One-key switch and indenting key menu save more display space.
- Iconic key operation, centralized menu makes it easier and faster to use.
- Built-in rechargeable lithium battery
- ECG waveforms of 7-leads display on the same screen



### Technical Specification:-

- Be applicable for adult, pediatric and neonatal for all-round monitoring, easy operation and high cost performance.
- Be applicable for medicine, surgery, operating room, ICU/CCU, emergency room, obstetrics and gynecology, pediatrics.
- Built-in rechargeable Li-polymer battery for uninterrupted monitoring.
- Compact and flexible appearance, easy for carrying and be suitable for indoor and outdoor (in ambulance) monitoring.
- With user-friendly interface.
- Display with 2.8' (320x240) color TFT LCD and red and yellow highlight LED.
- Visual and audible alarm for Systolic Pressure(SYS), Diastolic Pressure(DIA Mean Pressure(MAP), SpO2 and Pulse rate(PR),and upper and lower limit of alarm can be set.
- Unique Flash memory, storage for up to 2000 NIBP data and 78000 SpO2 data.
- Convenient and quick in inquiring measurement data, review for NIBP trend graph within 24-hour and SpO2 and Pulse rate(PR) trend graph within 20-hour. Request Callback.



## Product Description

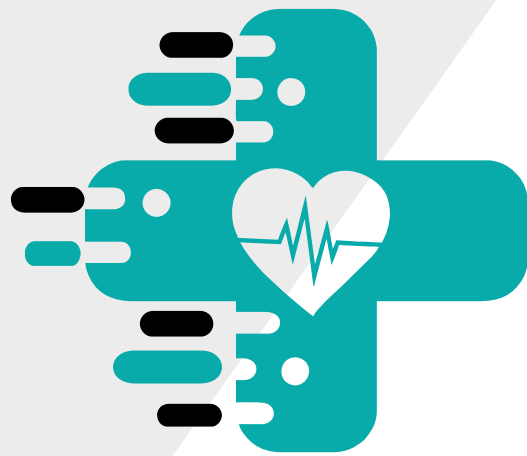
High radiation LED Phototherapy consist blue LED light source designed for the treatment of indirect Hyperbilirubinemia in new born

## LED Phototherapy stand

- Easy to operate.
- Low power consumption (12 W) compared to any conventional phototherapy system (120 W).
- LED's emitting blue light in 450-470 nm. Spectrum matching peak absorption wavelength (458 nm.) at which bilirubin is broken down.
- Do not emit light in infrared radiation range reduction the risk of fluid loss.
- Long life > 20,000 hrs.
- Negligible Maintenance cost.
- Intensity: > 25  $\mu\text{W} / \text{cm}^2 / \text{nm}$ .
- Heavy duty mobile stand with height adjustment facility & easy swivelling box when stand is to be used in conjunction with radiant warmer or infant trolley.
- Mounted on castors for easy mobility.
- M. S. Fabrication with powder coated paint .
- Time Totalizer (Optional).
- Operation Voltage : 100-250V AC, 50Hz .

## Features :

- LED's emitting blue light in 450-470 nm. Spectrum matching peak absorption wavelength (458 nm.) at which bilirubin is broken down
- Do not emit light in infrared radiation range reduction the risk of fluid loss.
- Compact, Portable & Easy to Carry.
- Low Power consumption (12 W).
- Long life > 20,000 hrs.
- Irradiance: > 25  $\mu\text{W} / \text{cm}^2 / \text{nm}$ .
- Can be used separately in mother bed / in trolley .
- M. S. Fabrication with powder coated paint .
- Time Totalizer (Optional).
- Operation Voltage : 100-250V AC, 50Hz .



**SUMIT SURGICAL**